

DIOCESE OF BATON ROUGE

EVANGELIZATION AND CATECHESIS

Youth and Young Adults

Discipleship . Fostering Catholic Identity . Evangelization

2016-2017 Reference Guide

Art work

“The Domestic Church” (The Family) - *by artist Adalie Brent.*

This large panel is affixed to the wall of the Employee Lounge in the Catholic Life Center’s Administration Building. The panel here depicts a domestic scene at home with all the family members clustered in the kitchen in shared activities. The family cat is also included into the scene. Other works by the artist are located on the ground floor lobby in the form of two large murals. ca. late 1960s –1970s.

Adalie Brent was commissioned by the Diocese of Baton Rouge to create several works of art that can be found throughout the Catholic Life Center. The Bishop at the time was Bishop Robert E. Tracy who served from November 8, 1961 to March 21, 1974.



Publisher

Office of Evangelization & Catechesis of the
Diocese of Baton Rouge

Editor

Mila Gernon

2016-2017

Table of Contents

Letter from Director.....	5
Goals/Mission	7
Staff Contact Information	8
How We Serve	11
Confirmation, Youth.....	15
Adult Confirmation Programs.....	18
Directories	25
MAT Schedule—2016-2017.....	50
MAT Online Registration Instructions.....	52

Office of Evangelization & Catechesis

Youth & Young Adult Ministry

2016



Staff

Dina DePaula
Director
ddepaula@diobr.org

Barry Schoedel
Associate Director for
Evangelization & Catechesis
bschoedel@diobr.org

Timothy Messenger
Associate Director for
Youth & Young Adult Ministry
tmessenger@diobr.org

VACANT
Associate Director of
Catechesis

Mila Gernon
Administrative Manager
mgernon@diobr.org

Michele Johnson
Administrative Assistant
mhall@diobr.org

Katie Roettger
Project Coordinator for
Youth Ministry
kroettger@diobr.org

Dear Co-Workers in the Vineyard!

We are truly blessed by God's call to serve Him in the vineyard of ministry. Whether in a parish or a school, or for some both, we are entrusted with the incredible role of witnessing, teaching and leading others to the truth as God reveals Himself through Jesus Christ. We have the role of bringing Christ to all people in what we do. The joy is we work together. This directory is proof that you are one of many in our local Church of the Diocese of Baton Rouge that have answered the call of lay ministry in the vineyard. We have the chance to bring Christ to all by praying, researching, planning, implementing, recruiting, training, inviting, hosting, welcoming, training, teaching, feeding, cleaning, praying more and regrouping! And with all this comes evangelization!

Catholic blogger, Kevin Cotter lists the 10 things Pope Francis wants you to know about evangelization:

*Everyone is meant to evangelize
Want authentic personal fulfillment? Evangelize!
Evangelization starts with our own relationship with Jesus
We must witness the faith with our lives
An Evangelizer must be joyful
We must encounter people to evangelize
We must know how to give an initial proclamation of Jesus
Get out of our comfort zone
Evangelizers love people
Everyone needs to be evangelized*

I encourage you to fully use this resource as you are planning and implementing. Many people included in this directory have experience in what is effective and what should be considered. Let's get together to collaborate about what is most important: our focus on Jesus Christ and bringing souls to Him.

Lastly, I would like to encourage a re-commitment to an increase in the academic enrollment of lay volunteer and professional catechists. Opportunities for theology courses are increasing over the next year with the expansion and updating MAT I & II, added Enrichments classes, as well opportunities to obtain undergraduate and graduate degrees in theology and pastoral ministry offered through local and various regional colleges online and on campus. For more details contact our office.

Please know your E & C Team is here to serve with your specific needs and ideas for the future. We have an open door and quick to respond policy! May the Lord guide you as you embrace the beauty of the vineyard and lead all souls to Him by your love.

Peace,

Dina DePaula
Director

Secretariat for Christian Formation

Offices of Evangelization & Catechesis, Marriage & Family Life, and Worship

WITNESS + TEACH + WORSHIP

Vision Statement - The ministries of the Christian Formation Secretariat focus on lifelong spiritual growth and formation within our local Church and greater community.

Mission Statement - As members of the Christian Formation Secretariat, our ministries are dedicated to inviting the people of God into the fullness of the Body of Christ through living a Eucharistic life, witnessing the Paschal Mystery, and forming disciples for ministry in the Diocese of Baton Rouge.

OFFICE OF EVANGELIZATION & CATECHESIS, YOUTH & YOUNG ADULTS

The essential mission of the Church is Evangelization and Catechesis and is passed on in a variety of ways: in parishes, Catholic schools, youth ministry, through the Rite of Christian Initiation, and through adult faith formation. The Office of Evangelization and Catechesis through its ministries, supports the vision and mission of the Secretariat of Christian Formation and collaborates with the Catholic Schools Office in their mission, to foster evangelization and lifelong spiritual growth within the members and families of our local Church, the greater community, and the world.

The Youth and Young Adult Ministry of the Office of Evangelization and Catechesis in the Diocese of Baton Rouge seeks to foster within all young people and those who minister to them a deeper, life-giving relationship with Jesus Christ and the Church. In particular, the staff who serve the youth and young adults of the diocese strive to provide vision within the context of all evangelization and catechesis—the vision and leadership that is necessary to serve the parish youth and young adult ministry efforts in a culturally diverse church. The office affirms the dignity and value of all young people in the service of family, church, community and the world.

EVANGELIZATION + CATHOLIC IDENTITY + DISCIPLESHIP

Evangelization — calls each person to a deeper faith, belief in the Gospel message and personal proclamation of the Gospel. The New Evangelization calls all Catholics to be evangelized, to go forth to evangelize others by renewing their relationship with Jesus Christ and helping others develop their relationship with Christ, too. It calls us to know the faith, live the faith, and share the faith. Evangelization is in all aspects of the catechetical ministries. As an office, we work to foster the goals of Catholic Evangelization by providing consultation, direct services, information and resources

Catholic Identity — means membership in the Catholic Churches the People of God formed and sustained by the Holy Spirit. Catholic identity consists in being in full communion with the Catholic Church. It is sacramental in nature, community focused, respectful of human life, and reverences Scripture and Tradition in an attitude of faith and hope. It is organic. It challenges us to remember we do not journey alone.

Discipleship — is knowing and following Jesus, the Way. A disciple regards all that he or she is and possesses as gifts and blessings, realizing it is essential to share these gifts and blessings with other followers for the sake of the kingdom of God. As Jesus' followers, they are called by God, not because of their works, but according to His own grace. Mature disciples make a conscious, firm decision, carried out in action, to be followers of Jesus Christ no matter what the cost. As an office, we work to provide a better understanding of discipleship and to assist adults and youth to recognize what it means to be a disciple.

Diocese of Baton Rouge

Office of Evangelization & Catechesis

STAFF



Dina DePaula

ddepaula@diobr.org
225.336.8760
Director



Barry Schoedel

bschoedel@diobr.org
225.336.8760
Associate Director

VACANT
Associate Director of Catechesis



Mila Gernon

mgernon@diobr.org
225.336.8760
E & C Office Administration Manager



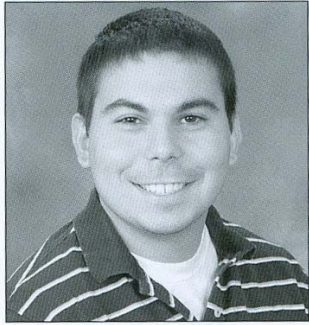
Michele Hall Johnson

mhall@diobr.org
225.336.8760
E & C Events & Projects Coordinator

Diocese of Baton Rouge

Office of Evangelization & Catechesis

STAFF (CONTINUED)



Tim Messenger

tmessenger@diobr.org

225.336.8751

**Associate Director for
Youth & Young Adult Ministries**



Katie Roettger

kroettger@diobr.org

225.336.8751

Youth Ministry Events Coordinator



Sr. Ileana Fernandez, C.S. J.


bratholicva@diobr.org

225-336-8751

Coordinator for *Young Adult Ministry*

Office of Evangelization & Catechesis



www.evangcatbr.org

Diocese of Baton Rouge Evangelization and Catechesis 

Youth & Young Adults

www.diobryouth.org

www.bratholicya.org

Catholic Diocese of Baton Rouge Youth Ministry
Diocese of Baton Rouge Young Adult Ministry 


Faith Formation

How we serve ...

EVANGELIZATION

Evangelization means “bringing the Good News of Jesus to every human situation and seeking to convert individuals and society by the divine power of the Gospel itself. Its essence is the proclamation of salvation in Jesus Christ and the response of the person in faith, both being the work of the Spirit of God”. (Go and Make Disciples, 1992) The New Evangelization calls each of us to deepen our faith, believe in the Gospel message and go forth to proclaim the Gospel. The focus of the New Evangelization calls all Catholics to be evangelized and then go forth to evangelize. In a special way, the New Evangelization is focused on 're-proposing' the Gospel to those who have experienced a crisis of faith. Pope Benedict XVI called for the re-proposing of the Gospel "to those regions awaiting the first evangelization and to those regions where the roots of Christianity are deep but who have experienced a serious crisis of faith due to secularization." The New Evangelization invites each Catholic to renew their relationship with Jesus Christ and his Church.

CATECHESIS

Catechesis is a process of initial conversion, formation, education, and on-going conversion. Through word, worship, service and community, it seeks to lead all God’s people to an ever deepening relationship with God who reveals Himself through Jesus Christ by the power of the Holy Spirit. The intention of the catechetical process of teaching and learning, is for students to respond by living their lives fully in Christ through active participation in the life of the Church and its mission in the world.

“The definitive aim of catechesis is to put people not only in touch, but also in communion and intimacy, with Jesus Christ: only he can lead us to the love of the Father in the Spirit and make us share in the life of the Holy Trinity.”

All efforts in catechesis need to incorporate the following tasks of catechesis:

1. promote knowledge of the faith,
2. promote knowledge of the meaning of the liturgy and the sacraments,
3. promote moral formation in Jesus Christ,
4. teach the Christian how to pray with Christ,
5. prepare the Christian to live in community and to participate actively in the life and mission of the church,
6. promote a missionary spirit that prepares the faithful to be present as Christians in society .

These tasks are imparted through individual relationships, the community of faith, liturgy, instruction, experiential learning, ritual, prayer, and outreach to the global community. “Continuing education in the faith is a question which concerns the whole community; catechesis, therefore is an educational activity which arises from the particular responsibilities of every member of the community, in a rich context of relationships” (GDC #220). Nothing can replace the experience of faith taught and practiced in the household. “Parents are catechists precisely because they are parents.” (NDC pg., 203). Therefore, central to elementary catechesis is the faith development of the entire household.

YOUTH CONFIRMATION

**ADULT CONFIRMATION
PROGRAMS**

Youth Confirmation

Parish	Confirmation Date	Retreat Date	Contact Person	Telephone Number	Email
NORTH CENTRAL DEANERY					
Immaculate Conception (Scotlandville)	May 3, 2017	TBD	Martha Davis (St. Paul the Apostle)	225-636-7612	marthad34@cox.net
Sacred Heart of Jesus	February 19, 2017	TBD	Lori Lively Tomecek	225-387-6671	ltomecek@sacredheartbr.org
St. Anthony of Padua/Le Van Phung	May 7, 2017	TBA	Anh-Dung J. Nguyen	225-485-8562	cuik25@gmail.com
St. Gerard Majella	No Candidates	—	Fr. Chuong Cao	225-355-22553	admin@st.gerardmajellachurch.org
St. Joseph Cathedral	Diocesan Adult Confirmation—Pentecost Sunday—June 4, 2017	N/A	Chris Redden	225-387-5928	office@cathedralbr.org
St. Paul the Apostle	May 3, 2017	TBA	Doris Hall	225-479-4693	halldoris38@yahoo.com
St. Louis King of France	May 2, 2017 @St. Isidore	January 21, 2017 @St. Alphonsus	Elise Moran	225-275-7280	dre@slkfbr.org
St. Isidore the Farmer	May 2, 2017	TBD	Monice Oliphant	225-775-8850	moliphant.stisidore01@gmail.com
St. Pius X	May 2, 2017	TBD	Monice Oliphant	225-775-8850	moliphant.stisidore01@gmail.com
Hispanic Apostolate -St Pius	April 20, 2017	March 31-April 2, 2017	Antonia Acosta	225-202-9060	AntoniaSAcosta@bellsouth.net
St. Alphonsus Liguori	April 27, 2017	TBD	Olga Johnson	225-261-4644	dre@alphonsus.org
Our Lady of Mount Carmel	April 30, 2017	January 21, 2017	Rick Beben	225-241-7981	rick.beben@gmail.com
St. John the Baptist (Zachary) &	April 19, 2017	April 19, 2017	Suzanne Payne	225-654-5778	spayne@sjb-ola.org
Our Lady of Assumption (Clinton)	April 19, 2017 w/ St. John the Baptist,	TBD	Denise Payne	225-278-6426	spayne@sjb-ola.org
NORTHEAST DEANERY*					
St. Margaret Queen of Scotland	*April 28, 2017	TBD	Lucie Hanewinkel	225-567-3573 x103	lmhanewinkel@eatel.com
St. Helena	*April 28, 2017	TBA	Fr. Mark Beard	985-748-9057	frmbeard@bellsouth.net
St. Joseph (Pontchatoula)	*April 28, 2017	TBD	Becki Alford	985-351-4126	stjosephyouththirst@gmail.com
Holy Ghost	October 17, 2017	October 16, 2017	Marli Freas	985-345-3360 ext. 26	mfreas@hgchurch.org
Mater Dolorosa	*April 28, 2017	TBD	Carol Young	985-878-9639	carol@materdolorosa.net
St. Stephen the Martyr	February 7, 2017	Net Retreat February 1, 2017	Kellye Babin/Deacon Little	225-695-6310	saintstephen@eatel.net
St. Joseph/French Settlement	February 7, 2017	Net Retreat February 1, 2017 @St. Joseph	Deacon Little	225-698-3373	jalittle@eatel.net
Our Lady of Pompeii (Tickfaw)	*April 28, 2017	TBA	Deacon Al Levy	985-345-8957	office@ourladyofpompeii parish.com

Mater Dolorosa, St. Helena, St. Margaret, St. Joseph/Pontchatoula, and Our Lady of Pompeii are celebrating confirmation together on April 28, 2017 at Holy Ghost in Hammond. ; St. Joseph/French Settlement, and St. Stephen the Martyr will celebrate confirmation together.

Parish	Confirmation Date	Retreat Date	Contact Person	Telephone Number	Email
NORTHWEST DEANERY					
St. John the Baptist (Brusly)	January 26, 2017	July 28 & July 30, 2016	June Hebert	225-749-3387	june@sjbcc.brcoxmail.com
Immaculate Conception (Lakeland)	February 9, 2017	TBD	Rachel Christ	225-627-5819	rchrist025@aol.com
St. Joseph/IHM (Grosse Tete) (Cluster)	February 23, 2017	N/A	Elsie Thompson	225-625-2438	duck@spillwaycable.com
St. Frances Xavier Cabrini (Cluster)	February 23, 2017	February 11, 2017 TENT. @ St. Joseph in Grosse Tete	Peggy Champagne	225-625-2438 or 225-456-0595/cell	greenwavesf@spillwaycable.com
Immaculate Heart of Mary (Cluster)	February 23, 2017	N/A	Elsie Thompson	225-625-2438	duck@spillwaycable.com
St. Ann (Morganza)	2018	Closed parish.	Cindy Guidroz/Janice Newton	225-694-3781	stannmorganza@gmail.com
St. Augustine	January/February 2017		Dianah Bourgeois	225-638-9665	sac@josephite.com
St. Mary of False River	February 6, 2017	August 13, 2016 (Closed parish)	Tim & Trudy Aguiard	225-638-9665	tcaguiard@hotmail.com
St. John the Evangelist	February 16, 2017	November 12, 2016	Andrea Young	225-687-2402	ryneball2@gmail.com
Holy Family w/ St. Gabriel at St. Jos. Cathedral	April 23, 2017	TBD	Jennifer LeJeune	225-336-4463	jlejeunehfc@gmail.com
St. Joan of Arc	w/Our Lady of Prompt February 25, 2017	N/A	Sheila Daigle	985-519-4123	olpschurch@cox.net
Our Lady of Prompt Succor(Cluster)	w/St. Joan spring 2017 February 25, 2017	N/A	Sheila Daigle	985-519-4123	olpschurch@cox.net
SOUTH CENTRAL DEANERY					
Christ the King	November 20, 2016 (Not open)	Not set		225-344-8595	
Most Blessed Sacrament	February 17, 2017	January 28-29, 2017	David Planche	225-751-5867	dplanche@mbsbr.org
Our Lady of Mercy	February 2, 2017	TBD	Jason Romero	225-926-1883	jromero@olomchurch.com
St. Agnes	April 22, 2017 (Not Open)	October 8, 2016 & March 4, 2017	Donna Davis	225-338-1511	saccd@att.net
St. Aloysius	November 10, 2016	TBD	MacDougall Womack	225-333-7839	mwomack@staloyusparish.com
Deaf Apostolate	None Scheduled for this year.	—	Donna Davis	225-387-8655/ 225-333-7839	ddavis@diobr.org
St. Francis Xavier			John Young	225-383-3479	stfrancisxavierccd@bellsouth.net
St. George	May 8, 2017	TBD	Pat Chidester	225-293-2212/ 931-0876	patc@st-george.org
St. Jean Vianney	April 25, 2017	Part I– December 31, 2016 /Part II— January 28, 2017	Denise Louviere	225-751-2926	dlouviere@stjeanvianney.org
St. Jude the Apostle	October 24, 2016	N/A	Melanie Chabarria	225-766-2431	melaniec@stjudecatholic.org
St. Patrick	April 29, 2017	TBA	Lisa Trahan (DRE) & Yvette Caillouet (Sec)	225-753-5750 / 756-9636	ltrahan1@cox.net / ycaillouet@stpatrickbr.org
St. Thomas More	October 19, 2016	August 27-28, 2016	Sarah Neau	225-275-3940	sarah@stmchurch.org
Immaculate Conception (Denham Springs)	January 19, 2017 or Jan. 20. 2017 (Ck w/ ICDS)	September 10/ November 19, 2016	Gwen Richard	225-665-5926	gcrichard@icc-msh.org
St. Gabriel	April 23, 2017	September 17, 2016 Angola w/Our Lady of Peace // November 13, 2016 with Holy Family in Port Allen	Myra Tirucit	225-642-8441	myratirucit@bellsouth.net

Parish	Confirmation Date	Retreat Date	Contact Person	Telephone Number	Email
SOUTHEAST DEANERY					
St. Mark	January 17, 2017	TBD	Mary Kruse	225-647-8461	stmarkpsr@eatel.net
St. Theresa of Avila	January 24, 2017 (Closed)	TBD	Alice Blair	226-647-6488	ablair@eatel.net
St. John the Evangelist	October 11, 2016		Caroline Mondello	225-229-4411	cajunmarie@gmail.com
Holy Rosary	May 9, 2017 (Open)	February 4, 2017 (Closed)	Wendy Enloe	225-647-3696	holyrosaryre@eatel.net
Most Sacred Heart of Jesus (Clustered w/ St. Michael)	February 20, 2017	October 8 & 15, 2016	Melissa Laurent	225-869-5751	mlaurent@rivrdcat.org
St. Joseph (Paulina) (Clustered with St. Michael & MSHJ)	February 21, 2017 (Paulina)	October 8 & 15, 2016	Melissa Laurent	225-869-5751	mlaurent@rivrdcat.org
St. Michael the Archangel (Clustered with MSHJ)	February 20, 2017 (with Sacred Heart)	October 8 & 15, 2016	Deacon Alfred Adams	225-562-3255	deaconal2@bellsouth.net
St. Anthony of Padua (Clustered with St. Anne)	May 7, 2017	N/A	Shanon Collins	225-675-8126	stannepsr@eatel.net
St. Anne (Clustered w/t Anthony)	February 11, 2017	TBD	Shanon Collins	226-675-8126	stannepsr@eatel.net
SOUTHWEST DEANERY					
Ascension of Our Lord (Clustered with St. Francis Assisi)	January 28, 2017	TBD	Susan Jumonville	225-473-3176	Susanj777@aim.com
St. Francis of Assisi (D'Ville) (Clustered with Ascension of Our Lord)	January 28, 2017	TBD	Susan Jumonville	225-473-3176	Susanj777@aim.com
St. Anne (Napoleonville) (Clustered with Assumption)	April 24, 2017	TBD	Kathy Landry	985-369-6656	stanne03@att.net
Assumption of the BVM (Plattenville) (Clustered w/	April 24, 2017	TBD	Kathy Landry	985-369-2130	stanne03@att.net
St. Philomena	April 24, 2017	TBD	Jennifer Giambrone	985-526-4247	dre.philomena1847@gmail.com
St. Catherine of Siena (D'Ville)	Fall 2017	TBD	Cassandra Brimmer	225-348-2020	risehir@yahoo.com
St. Benedict the Moor (Bertrandville)	10/09/2016	TBD	Jerilyn Williams	985-513-2528 & 985-513-3470	msjerry-wms2010@gmail.com
St. Augustine	TBD	TBD	Ingrid Breaux	985-513-3470	ibreaux@hughes.net
St. Jules (Belle Rose) (Clustered with St. Elizabeth)	April 18, 2017	January 6-7, 2017	Angelle Blanchard	225-473-8569	dre@sesjchurch.com
St. Elizabeth (Paincourtville) with St. Jules	April 18, 2017	January 6-7, 2017	Angelle Blanchard	225-473-8569	dre@sesjchurch.com
St. Joseph the Worker (Pierre Part) (with St. Jules/St. Eliza-	April 18, 2017	TBA	Janice Pintado & Anna Mabile	985-252-6633	janice@sjworker.org & anna@sjworker.org
Our Lady of Peace (Vacherie)	February 14, 2017	TBD	Margaret Cortez	225-206-0566	margaretc1030@gmail.com
St. James (St. James) (Clustered with St. Philip)	January 22, 2017 St. Philip @ St. James	TBD	—	225-4085	stphilip.gcach@gmail.com
St. Philip (Vacherie) (Clustered with St. James)	January 22, 2017 w/ St. James @ St. James	TBD	—	225-265-4085	stphilip.gcach@gmail.com

Adult Confirmation Programs

(RCIA) or (Separate) indicates whether adults seeking confirmation are in a separate program or as part of the RCIA process.

CHURCH PARISH	CONTACT PERSON	CONTACT INFORMATION	ACCEPTS PEOPLE OUT OF PARISH
<u>NORTH CENTRAL DEANERY</u>			
St. Alphonsus Church, Greenwell Springs, LA (RCIA)	Cindy Schlatre	225-261-4644 cindi@alphonsus.org	YES
St. Anthony/ Le Van Phung Baton Rouge, LA (RCIA)	Rev. Peter Tan Viet Nguyen	225-357-4800 revtannguyen@aol.com	NO
St. Isidore & St. Pius Catholic Church Baton Rouge, LA (RCIA)	Kelly Kofton	225-775-8850 kkofton@stisidorecommunity.org	—
Hispanic Apostolate (at St. Isidore Catholic Church)	Fr. Elercer Montanez-Grimaldos	225-456-1530 fatheremcm@gmail.com	
St. John the Baptist /Our Lady of the Assumption Zachary, LA (RCIA)	Joey Hebert	225-660-5880 joey.hebert@gapac.com	NO
St. Joseph Cathedral Baton Rouge, LA (RCIA)	Chris Redden	225-387-5928 office@cathedralbr.org	YES
St. Louis King of France Baton Rouge, LA (Separate)	Elise Moran	225-275-7280 dre@slkfbr.org	—
St. Paul the Apostle Baton Rouge, LA (RCIA)	Fr. Richard Andrus	225-383-2537 ricksvd@aol.com	YES
Immaculate Conception Baton Rouge, LA (Separate)	Fr. Thomas F. Clark	225-775-7067 clarktf@hotmail.com	NO
Sacred Heart of Jesus Baton Rouge, LA	Clare Coulon	225-387-6671 ccoulon@sacredheartbr.org	YES

CHURCH PARISH	CONTACT PERSON	CONTACT INFORMATION	ACCEPTS PEOPLE OUT OF PARISH
St. Gerard Majella Church Baton Rouge, LA (Separate)	Fr. Chuong Cao	225-355-2553 admin@stgerardmajellachurch.org	—
Our Lady of Mt. Carmel St. Francisville, LA (RCIA)	Pam Percy	225-635-3149 pampercy1@yahoo.com	NO
<u>NORTH EAST DEANERY</u>			
Holy Ghost Hammond, LA (Separate)	Trisha Labbe	985-345-3360 tlabbe@hgchurch.org	YES
Mater Dolorosa Independence, LA (Separate)	Carol Young	985-878-9639 carol@materdolorosa.net	YES
St. Helena Church Amite, LA (RCIA)	Trudy T. Currier	985-748-9057 trudy.currier@gmail.com	NO
St. Joseph Church Ponchatoula, LA (Separate)	Ed & Julie Hanks	985-467-4402 julieandedinhammond@yahoo.com	YES
St. Joseph/ St. Stephen Fr. Settlement/Maurapas, LA (As Needed)	Fr. Jason Palermo	225-698- 3110 jasonpalermo1@netzero.com	YES
St. Margaret/St Thomas Albany, LA (Separate)	Deacon John Veron	225-567-3573 jwv24@cox.net	—
Our Lady of Pompeii Tickfaw, LA (RCIA)	Sr. Joel Gubler	504-352-5595 gubler58@aol.com	NO
<u>NORTHWEST DEANERY</u>			
Holy Family Church Port Allen, LA (RCIA)	Jennifer LeJeune	225-336-4463 jleljeunehfc@gmail.com	YES
Immaculate Conception Lakeland, LA (Separate)	Rachel Christ	225-627-5819 rchrist025@aol.com	NO

CHURCH PARISH	CONTACT PERSON	CONTACT INFORMATION	ACCEPTS PEOPLE OUT OF PARISH
Our Lady of Prompt Succor White Castle, LA (RCIA)	Dianne Hebert Phyllis Jumonville	225-545-3532 225-545-3450	NO
St. Ann Church Morganza, LA (RCIA)	Maureen Feduccia	225-694-2135 mgfeduccia@att.net stanns@bellsouth.net	NO
St. Augustine Church New Roads, LA (Separate)	Fr. Healy	225-638-7553 sac@josephite.com	YES
St. Frances X Cabrini Livonia, LA (RCIA)	Peggy Champagne	225-456-0595 greenwavesf@spillwaycable.com	YES
St. John the Baptist Brusly, LA (Separate)	Carolyn Dupuy	225-749-2189 carolyn@sjbcc.brcoxmail.com	YES
St. Mary False River New Roads, LA (RCIA)	Gale Roy	225-638-6049 roygaleb@bellsouth.net	YES
St. John the Evangelist Plaquemine, LA (Separate)	Donna Carville	225-687-2402 dbcaville@gmail.com	YES

SOUTH CENTRAL DEANERY

Christ the King Baton Rouge, LA (Separate)	Parochial Vicar	225-344-8595 crutherford@ctk-lsu.org dfontenot@ctk-lsu.org	
Immaculate Conception Denham Springs, LA	Dea. Rudy Stahl	225-665-9631 deaconrudy@icc-msh.org	YES
Most Blessed Sacrament Baton Rouge, LA (Separate)	David Planche	225-751-5867 dplanche@mbsbr.org	NO
Our Lady of Mercy Baton Rouge, LA (RCIA)	Mr. Jason Romero	225-926-9356 jromero@olomchurch.com	YES
St. Agnes Baton Rouge, LA (RCIA)	Kitty Blanchard	225-383-4127 saintagnes2@bellsouth.net	YES

CHURCH PARISH	CONTACT PERSON	CONTACT INFORMATION	ACCEPTS PEOPLE OUT OF PARISH
St. Francis Xavier Baton Rouge, LA (RCIA)	John Young	225-383-3479 stfrancisxavierccd@bellsouth.net	YES
St. Gabriel Church St. Gabriel, LA	Myra Tircuit	225-642-8441 myratircuit@bellsouth.net	YES
St. George Baton Rouge, LA (Separate)	Karen Fawley	225-293-2212 karenf@st-george.org	YES
St. Jean Vianney Baton Rouge, LA (Separate)	Denise Louviere	225-751-2926 dlouviere@stjeanvianney.org	YES
St. Jude the Apostle Baton Rouge, LA (Separate)	Melanie Chabarria	225-766-2431 melaniec@stjudecatholic.org	YES
St. Patrick Baton Rouge, LA (RCIA)	Mickey Brown	225-272-9213	YES
St. Thomas More Baton Rouge, LA (RCIA)	Sarah Neau	225-275-3940 sarah@stmchurch.org	YES
<u>SOUTHEAST DEANERY</u>			
Holy Rosary St. Amant, LA (Separate)	Wendy Enloe	225-647-3696 holyrosaryre@eatel.net	YES
St. Anne / St. Anthony Sorrento/ Darrow, LA (RCIA)	Shanon Collins	225-675-8126 stannepsr@eatel.net	YES
St. John the Evangelist Prairieville, LA (Separate)	Dea. Randy Clement	225-673-8307 deaconrandy@etigers.net	YES
St. Mark Catholic Church Gonzales, LA (Separate)	Donna Chestovich/ Kathleen Lo Cicero	225-938-1012 225-446-3777 dchestovich@hotmail.com stmarkmgr@eatel.net	YES

CHURCH PARISH	CONTACT PERSON	CONTACT INFORMATION	ACCEPTS PEOPLE OUT OF PARISH
---------------	----------------	---------------------	------------------------------

St. Theresa of Avila Gonzales, LA (Separate)	Alice Blair	225-647-6588 Ext. 30 ablair@eatel.net	YES
Sacred Heart/St. Joseph St. Michael River Parishes Cluster (Separate)	Terry Meaney	225-869-8429 temmm@bellsouth.net	YES

SOUTHWEST DEANERY

Ascension of Our Lord/ St. Francis of Assisi Donaldsonville, LA	Susan Jumonville	susanj777@aim.com 225-473-3196	YES
Our Lady of Peace Vacherie, LA (Separate)	Pamela Folse	225-265-3953 Ext. 13 pfolse@olopchurch.org	YES
St. Benedict the Moor Napoleonville, LA (RCIA)	Chrystal Dennis	225-323-1778 chrystaldennis@att.net	YES
St. James/St. Philip St. James, LA (Separate)	Janel Gordon	225-265-4210 225-265-1013 jawgordre@gmail.com	YES
St. Joseph the Worker Pierre Part, LA (Separate)	Fr. Al Davidson	985-252-6008 / 985-513-4444 adavidson@diobr.org	YES
St. Philomena Labadieville, LA (RCIA)	Stephanie Shaw	985-526-4247 sshaw.dre@gmail.com	NO
St. Elizabeth/ St. Jules Paincourtville, LA (RCIA)	Megan Braud & Norma Blanchard	225-473-8569 mbraud@sesjchurch.com nblanchardame@charter.net	YES
St. Catherine of Siena Donaldsonville, LA	Dea. Ed Gauthreaux	225-473-8350 gauthre@yahoo.com	YES
St. Anne/Assumption Napoleonville/Plattenville, LA	Kathy Landry	985-369-6656 stamme03@att.net	—

DIRECTORIES

PARISH DIRECTORY

NORTH CENTRAL DEANERY

PARISH: **HISPANIC APOSTOLATE**
ADDRESS: 6380 Hooper Road
Baton Rouge, LA 70811
PHONE: 225-927-8700
FAX: 225-927-8787
NAME: Rev. Eliecer Grimaldos, M.C.M., Chaplain
EMAIL: fatheremcm@gmail.com
Maria Rosa Eads, Executive Director
hapostol@bellsouth.net
Rita Rangel/Rangelemel@aol.com
Bro. Renzo Alvarado/
renzoalvarado@gmail.com
Antonia Acosta//antoniasacosta@bellsouth.net

PARISH: **IMMACULATE CONCEPTION**
ADDRESS: 1565 Curtis Street
Baton Rouge, LA 70807
PHONE: 225-775-7067
FAX: 225-775-0775
NAME: Mrs. Gloria Derouen, Director
EMAIL: g1930@att.net
Andrea Toles, Asst. Director/Child Protection
andrea.toles@yahoo.com

PARISH: **OUR LADY OF MT. CARMEL**
ADDRESS: P.O. Box 1249
St. Francisville, LA 70775
PHONE: 225-635-2324
FAX: 225-635-2344
NAME: Mary Godke, Elementary
EMAIL: marygodke@gmail.com
Rick Beben, DRE / 225-241-7981
rick.beben@gmail.com

PARISH: **ST. ALPHONSUS**
ADDRESS: 14040 Greenwell Springs Road
Greenwell Springs, LA 70739
PHONE: 225-261-4644
FAX: 225-261-5650
NAME: Olga Johnson, DRE
EMAIL: dre@alphonsus.org

PARISH: **SACRED HEART OF JESUS**
ADDRESS: 2250 Main Street
Baton Rouge, LA 70802
PHONE: 225-387-6671
FAX: 225-387-6674
NAME: Lori Lively Tomecek
EMAIL: ltomecek@sacredheartbr.org

PARISH: **ST. ANTHONY/LE VAN PHUNG**
ADDRESS: 2305 Choctaw
Baton Rouge, LA 70805
PHONE: 225-381-4875
FAX: 225-354-0611
NAME: Dung Anh (Zoom) Nguyen,
DRE-Vietnamese
EMAIL: cui25@gmail.com

PARISH: **ST. GERARD MAJELLA**
ADDRESS: 3808 St. Gerard Avenue
Baton Rouge, LA 70805
PHONE: 225-355-2553
FAX: 225-356-7472
NAME: Fr. Chuong Cao, DRE
EMAIL: admin@stgerardmajellachurch.org

PARISH: **ST. ISIDORE THE FARMER (Cluster)**
ADDRESS: 5657 Thomas Road
Baton Rouge, LA 70811
PHONE: 225-775-8850
FAX: 225-775-7072
NAME: Monice Oliphant, DRE/Youth Minister
EMAIL: moliphant.stisidore01@gmail.com

PARISH: **ST. PIUS X (Cluster)**
ADDRESS: 6380 Hooper Road
Baton Rouge, LA 70811
PHONE: 225-357-5935
FAX: 225-357-6005
NAME: Monice Oliphant
EMAIL: moliphant.stisidore01@gmail.com

PARISH: **ST. JOHN THE BAPTIST**
ADDRESS: 4727 McHugh Drive
Zachary, LA 70791
PHONE: 225-654-5885
FAX: 225-654-5294
NAME: Suzanne Payne, DRE
EMAIL: spayne@sjb-ola.org

PARISH: **OUR LADY OF ASSUMPTION**
(Mission)
ADDRESS: 5191 Highway 19
Ethel, LA 70730
PHONE: 225-278-6426
FAX:
NAME: Denise Payne, DRE
EMAIL: mandplumbing@bellsouth.net

PARISH: **ST. JOSEPH CATHEDRAL**
ADDRESS: 412 North Street
Baton Rouge, LA 70802
PHONE: 225-387-5928
FAX: 225-387-5929
NAME: Chris Redden
EMAIL: office@cathedralbr.org

PARISH: **ST. LOUIS KING OF FRANCE**
ADDRESS: 2121 N. Sherwood Forest Dr.
Baton Rouge, LA 70815
PHONE: 225-275-7280
FAX: 225-275-5845
NAME: Elise Moran, Director of Faith Formation
EMAIL: dre@slkfbr.org

PARISH DIRECTORY

NORTH CENTRAL DEANERY (Continued)

PARISH: **ST. PAUL THE APOSTLE**
ADDRESS: 3912 Gus Young Avenue
Baton Rouge, LA 70802
PHONE: 225-383-2537
FAX: 225-383-3702
NAME: Martha Davis, DRE
EMAIL: marthad34@cox.net

NORTHEAST DEANERY

PARISH: **HOLY GHOST**
ADDRESS: 601 N. Oak Street
Hammond, LA 70401
PHONE: 985-345-3360 x28
FAX: 985-542-4191
NAME: Trisha Labbe, DRE
EMAIL: tlabbe@hgchurch.org
Marli Freas
Middle, H.S.
mfreas@hgchurch.org

PARISH: **OUR LADY OF POMPEII**
ADDRESS: P. O. Box 276
Tickfaw, LA 70466
PHONE: 985-345-6355
FAX: 985-542-8490
NAME: Sr. Joel Gubler, DRE
EMAIL: ladyofpompeii@bellsouth.net
gubler58@aol.com

PARISH: **MATER DOLOROSA**
ADDRESS: P. O. Box 349
Independence, LA 70443
PHONE: 985-878-9639
FAX: 985-878-6260
NAME: Carol Young,
Dir. of Christian Formation
EMAIL: carol@materdolorosa.net

PARISH: **ST. ALBERT THE GREAT**
ADDRESS: 409 West Dakota Street
Hammond, LA 70401
PHONE: 985-345-7206
FAX: 985-345-7223
NAME: Fr. Michael Miceli
EMAIL: mmiceli@bellsouth.net

PARISH: **ST. HELENA**
ADDRESS: 122 S. 1st Street
Amite, LA 70422
PHONE: 985-748-9057
FAX: 985-748-9094
NAME: Jamie Callihan, DRE
EMAIL: jamie@sthelenachurch.net
Trudy T. Currier, CRE
trudy.currier@gmail.com

PARISH: **ST. JOSEPH** (cluster)
ADDRESS: 15710 LA Hwy. 16
French Settlement, LA 70733
PHONE: 225-698-3110
FAX: 225-698-1512
NAME: Barbara (Jinx) Berthelot, DRE
225-963-0279
EMAIL: bjberthelot@yahoo.com

PARISH: **ST. STEPHEN THE MARTYR**
(Cluster)
ADDRESS: 22494 LA Highway 22
Maurepas, LA 70449
PHONE: 225-695-6310
FAX: 225-698-1512
NAME: Kim Bourgeois, Elm. PSR
Dana Vicknair, HS PSR
EMAIL: saintstephen@eatel.net
(All correspondence should be sent to
St. Joseph, French Settlement)

PARISH: **ST. JOSEPH**
ADDRESS: P.O. Box 368
Ponchatoula, LA 70454
PHONE: 985-386-3749
FAX: 985-386-4188
NAME: Ed Hanks, Adult Formation/RCIA
EMAIL: julieandedinhammond@yahoo.com
Denise Arnondin, PSR K-5
darnondin33@charter.net
Becki Alford, PSR 6-12, Youth Minister
becki.alford@gmail.com

PARISH: **ST. MARGARET**
ADDRESS: P.O. Box 100
Albany, LA 70711
PHONE: 225-567-3573
FAX: 225-567-2031
NAME: Lucie Hanewinkel, DRE
EMAIL: lmhanewinkel@gmail.com

PARISH DIRECTORY

NORTHWEST DEANERY

PARISH: **HOLY FAMILY**
ADDRESS: P.O. Box 290
Port Allen, LA 70767
PHONE: 225-336-4463
FAX: 225-383-1839
NAME: Jennifer LeJeune, DRE
EMAIL: jlejeunefc@gmail.com

PARISH: **IMMACULATE CONCEPTION**
ADDRESS: P.O. Box 158
Lakeland, LA 70752
PHONE: 225-627-5819
FAX: 225-627-5496
NAME: Rachel Christ, DRE
EMAIL: rchrist025@aol.com

PARISH: **ST. JOSEPH/ IMMACULATE HEART OF MARY** (Cluster)
ADDRESS: 11140 LA Highway 77
Maringouin, LA 70757
PHONE: 225-625-2438
FAX: 225-625-3513
NAME: Elsie Thompson, DRE
EMAIL: duck@spillwaycable.com

PARISH: **ST. FRANCES X. CABRINI** (Cluster)
ADDRESS: P.O. Box 128
Livonia, LA 70755
PHONE: 225-625-2438
FAX: 225-637-3513
NAME: Peggy Champagne, DRE
EMAIL: greenwavesf@spillwaycable.com

PARISH: **ST. JOSEPH** (Cluster)
ADDRESS: P.O. Box 8
Grosse Tete, LA 70740
PHONE: 225-625-2438
FAX: 225-625-3513
NAME: Elsie Thompson, DRE
EMAIL: duck@spillwaycable.com

PARISH: **OUR LADY OF PROMPT SUCCOR** (Cluster)
ADDRESS: P.O. Box 249
White Castle, LA 70788
PHONE: 225-545-3635
FAX: 225-545-8615
NAME: Shelia Daigle, DRE - 225-545-3635
EMAIL: olpschurch@cox.net

PARISH: **ST. ANN**
ADDRESS: P. O. Box 128
Morganza, LA 70759
PHONE: 225-694-3781
FAX: 225-694-3711
NAME: Rev. Brent Maher, DRE
Retta Ramagos, Secretary
Cindy Guidroz—Elementary/CRE
Janice Newton—High School/CRE
EMAIL: stannmorganza@gmail.com

PARISH: **ST. AUGUSTINE**
ADDRESS: 807 New Roads St.
New Roads, LA 70760
PHONE: 225-638-7553
FAX: 225-638-2947
E-MAIL: sacsecretary@josephite.com
NAME: Gail Hurst, 225-324-8362
sac@josephite.com

PARISH: **ST. JOHN THE BAPTIST**
ADDRESS: P. O. Box 248
Brusly, LA 70719
PHONE: 225-749-3387
FAX: 225-749-1921
NAME: June Hebert, DRE
EMAIL: june@sjbcc.brcoxmail.com

PARISH: **ST. JOHN THE EVANGELIST**
ADDRESS: 57805 Main Street
Plaquemine, LA 70764
PHONE: 225-687-2402
FAX: 225-687-1587
NAME: Andrea Young, Coordinator of Rel. Ed.
EMAIL: ryneball2@gmail.com

PARISH: **ST. MARY OF FALSE RIVER**
ADDRESS: 348 W. Main St.
New Roads, LA 70760
PHONE: 225-638-6508
FAX: 225-638-6346
NAME: Tim & Trudy Aguillard, Co-DREs
225-324-5007/Tim
225-324-2792. Trudy
EMAIL: tcaguillard@hotmail.com

PARISH: **ST. JOAN OF ARC** (Cluster)
ADDRESS: 39315 Hwy. 75
Plaquemine, LA 70764
PHONE: 225-545-8213
FAX: 225-545-8213
NAME: Rev. Joey Angeles
EMAIL: joeythepogi@aol.com

PARISH DIRECTORY

SOUTH CENTRAL DEANERY

PARISH: **CHRIST THE KING**
ADDRESS: LSU Box 25131
Baton Rouge, LA 70894
PHONE: 225-344-8595
FAX: 225-344-1920
NAME: Diane Fontenot, DRE
EMAIL: dfontenot@ctk-lsu.org

PARISH: **MOST BLESSED SACRAMENT**
ADDRESS: 15615 Jefferson Hwy
Baton Rouge, LA 70817
PHONE: 225-751-5867
FAX: 225-751-6738
NAME: David Planche,
Director of Christian Formation
EMAIL: dplanche@mbspbr.org

PARISH: **OUR LADY OF MERCY**
ADDRESS: 445 Marquette Ave
Baton Rouge, LA 70806
PHONE: 225-926-1883
FAX: 225-923-0448
NAME: Michele Decoteau, Children's Formation Director
EMAIL: Michele.decoteau@olomchurch.com
225-928-6204
Jason Romero, Parish Formation Director
jromero@olomchurch.com

PARISH: **ST. AGNES**
ADDRESS: 749 East Boulevard
Baton Rouge, LA 70802
PHONE: 225-383-4127, 225-338-1511
FAX: 225-383-4154
NAME: Donna Davis - R.E. Bldg: 225-338-1511
Religious Education Coordinator
EMAIL: saccd@att.net / ddavis@diobr.org

DEAF MINISTRY
225-338-1511 / 225-383-4154/fax
Donna Davis
ddavis@diobr.org

PARISH: **ST. ALOYSIUS**
ADDRESS: 2025 Stuart Ave
Baton Rouge, LA 70808
PHONE: 225-343-6657
FAX: 225-344-6847
NAME: Patricia Greely, DRE / Elementary PSR
EMAIL: tgreely@staloyusparish.com
Kathy Screen, Director of Spirituality
kscreen@staloyusparish.com
McDougall Womack, Secondary, PSR &
Director of Youth Ministry
mwomack@staloyusparish.com

PARISH: **IMMACULATE CONCEPTION**
ADDRESS: P. O. Box 1609
Denham Springs, LA 70727
PHONE: 225-665-5359
FAX: 225-665-5996
NAME: Gwen Richard, DRE
EMAIL: gcrichard@icc-msh.org
Dea. Rudy Stahl, Adult Faith Formation
deaconrudy@icc-msh.org

PARISH: **ST. FRANCIS XAVIER**
ADDRESS: 1134 Julia Street
Baton Rouge, LA 70802
PHONE: 225-334-0272
FAX: 225-343-4259
NAME: John Young, DRE
EMAIL: stfranxavierccd@bellsouth.net

PARISH: **ST. GABRIEL**
ADDRESS: 3625 LA Highway 75
St. Gabriel, LA 70776
PHONE: 225-642-8441
FAX: 225-642-8491
NAME: Myra Tircuit, DRE & YM
EMAIL: myratircuit@bellsouth.net

PARISH: **ST. GEORGE**
ADDRESS: 7808 St. George Drive
Baton Rouge, LA 70809
PHONE: 225-293-2212
FAX: 225-291-8063
NAME: Karen Fawley,
Director of Adult Faith Formation
karenf@st-george.org
NAME: Molly Rose, Director of Child Faith
Formation
mollyr@st-george.org
NAME: Pat Chidester, Dir. of Confirmation
225-293-2212
patc@st-george.org

PARISH DIRECTORY

SOUTH CENTRAL DEANERY (Continued)

PARISH: **ST. JEAN VIANNEY**
ADDRESS: 16166 S. Harrell's Ferry Road
Baton Rouge, LA 70816
PHONE: 225-753-7950
FAX: 225-753-7965
NAME: Denise Louviere, DRE/225-751-2926
EMAIL: dlouviere@stjeanvianney.org
Betty Wright, Rel. Education Assistant
bwright@stjeanvianney.org

PARISH: **ST. JUDE THE APOSTLE**
ADDRESS: 9150 Highland Road
Baton Rouge, LA 70810
PHONE: 225-766-2431
FAX: 225-766-0722
NAME: Melanie Chabarria, DRE
EMAIL: melaniec@stjudecatholic.org

PARISH: **ST. PATRICK**
ADDRESS: 12424 Brogdon Lane
Baton Rouge, LA 70816
PHONE: 225-753-5750
FAX: 225-756-9636
NAME: Lisa Trahan, DRE
EMAIL: ltrahan1@stpatrickbr.org
Yvette Caillouet, Formation Secretary
ycaillouet@stpatrickbr.org

PARISH: **ST. THOMAS MORE**
ADDRESS: 11441 Goodwood Blvd.
Baton Rouge, LA 70815
PHONE: 225-275-3940
FAX: 225-275-1407
NAME: Sarah Neau, DRE
EMAIL: sarah@stmchurch.org

PARISH: **HISPANIC APOSTOLATE**
ADDRESS: 6380 Hooper Road
Baton Rouge, LA 70811
PHONE: 225-927-8700
FAX: 225-927-8787
NAME: Rev. Eliecer Grimaldos, M.C.M., Chaplain
EMAIL: fatheremcm@gmail.com
Maria Rosa Eads, Executive Director
hapostol@bellsouth.net
Rita Rangel
Rangelemel@aol.com
Antonia Acosta
antoniasacosta@bellsouth.net

PARISH DIRECTORY

SOUTHEAST DEANERY

PARISH: **HOLY ROSARY**
ADDRESS: 44450 Hwy. 429
St. Amant, LA 70774
PHONE: 225-647-3696
FAX: 225-647-5322
NAME: Wendy Enloe, DRE
EMAIL: holyrosaryre@eatel.net
Jamie Lambert, Asst. DRE
holyrosaryrea@eatel.net

PARISH: **MOST SACRED HEART OF JESUS**
(Cluster)
ADDRESS: PO Box 129
Paulina, LA 70763
PHONE: 225-869-5751
FAX: 225-869-5324
NAME: Harriet Melancon, DRE, Elem.
225-206-7032
EMAIL: hdm8@cox.net
Melissa Laurent, Dir. High School
225-869-5751
mllaurent@rivrdcat.org

PARISH: **ST. JOSEPH** (Cluster)
ADDRESS: P. O. Box 129
Paulina, LA 70763
PHONE: 225-869-5751
FAX: 225-869-4166
NAME: Donna Waguespack,
Dir. Elem. Religious Education
EMAIL: dwaguespack@rivrdcat.org
Melissa Laurent, Dir. High School
225-869-5751
mllaurent@rivrdcat.org

PARISH: **ST. MICHAEL THE ARCHANGEL**
(Cluster)
ADDRESS: P. O. Box 129
Paulina, LA 70763
PHONE: 225-869-5751
FAX: 225-869-4166
NAME: Deacon Alfred Adams,
225-562-3255/ Off. In Convent
High School Religious Education
EMAIL: deaconal2@bellsouth.net
Carol Ann Rome,
Elementary Religious Ed.

PARISH: **ST. JOHN THE EVANGELIST**
ADDRESS: 15208 Hwy 73
Prairieville, LA 70769
PHONE: 225-673-8402
FAX: 225-677-9972
NAME: Marlene Bruce, DRE
EMAIL: marlene@eatel.net

PARISH: **ST. MARK**
ADDRESS: 42021 Highway 621
Gonzales, LA 70737
PHONE: 225-647-8461
FAX: 225-647-5125
NAME: Mary Kruse, DRE
EMAIL: stmarkpsr@eatel.net

PARISH: **ST. THERESA OF AVILA**
ADDRESS: 1022 N. Burnside Ave
Gonzales, LA 70737
PHONE: 225-647-6588 ext.11
FAX: 225-647-2223
NAME: Alice Blair, DRE
EMAIL: ablair@eatel.net

PARISH: **ST. ANNE/ST. ANTHONY**
(Cluster)
ADDRESS: P. O. Box 9
Sorrento, LA 70778
PHONE: 225-675-8126
FAX: 225-675-6150
NAME: Shanon Collins, DRE
EMAIL: stannpsr@eatel.net

PARISH: **ST. PHILOMENA**
ADDRESS: P.O. Box 99
Labadieville, LA 70372
PHONE: 985-526-4247
FAX: 985-526-4128
NAME: Jennifer Giambrone, DRE
EMAIL: dre.philomena1847@gmail.com

PARISH DIRECTORY

SOUTHWEST DEANERY

PARISH: **ASCENSION/ST. FRANCIS** (Cluster)
ADDRESS: P.O. Box 508
Donaldsonville, LA 70346
PHONE: 225-473-3176
FAX: 225-473-3256
NAME: Susan Jumonville, CRE
EMAIL: susanj777@aim.com

PARISH: **ST. CATHERINE OF SIENA**
ADDRESS: P.O. Box 1094
Donaldsonville, LA 70346
PHONE: 225-473-8350
FAX: 225-473-9978
NAME: Cassandra "Cassie" Brimmer
225-257-4999 DRE Office
EMAIL: risehir@yahoo.com

PARISH: **ST. BENEDICT THE MOOR**
ADDRESS: P. O. Box 220
Napoleonville, LA 70390
PHONE: 985-513-2528
FAX: 985-513-3474
NAME: Jerilyn (Jerry) Williams, DRE
EMAIL: msjerrywms2010@gmail.com

PARISH: **ST. AUGUSTINE** (Mission of St. Benedict)
ADDRESS: P. O. Box 220
Napoleonville, LA 70390
PHONE: 985-513-3470
FAX: 985-513-3474
NAME: Ingrid Breaux
EMAIL: ibreaux@hughes.net

PARISH: **OUR LADY OF PEACE**
ADDRESS: 13281 LA Hwy 644
Vacherie, LA 70090
PHONE: 225-265-3953, ext. 13
FAX: 225-265-2507
NAME: Pamela Folse, Pastoral Associate
EMAIL: pfolse@olopchurch.org

PARISH: **ST ANNE/ASSUMPTION** (Cluster)
ADDRESS: P. O. Drawer 99
Napoleonville, LA 70390
PHONE: 985-369-6656
FAX: 985-369-9718
NAME: Kathy Landry, DRE
EMAIL: stanne03@att.net

PARISH: **ST. JOSEPH THE WORKER**
ADDRESS: P. O. Box 190
Pierre Part, LA 70339
PHONE: 985-252-6633
FAX: 985-252-8011
NAME: Janice Pintado, DRE
EMAIL: janice@sjworker.org
Anna Mabile,
Assoc. Dir., Christian Formation
anna@sjworker.org

PARISH: **ST. JAMES** (Cluster)
ADDRESS: 6613 LA Hwy 18
St. James, LA 70086
PHONE: 225-265-4210
FAX: 225-265-4225
NAME: Fr. Rubin Dykes
EMAIL: stphilip.gcah@gmail.com

PARISH: **ST. PHILIP** (Cluster)
ADDRESS: 1175 Hwy. 18
Vacherie, LA 70090
PHONE: 225-265-4085 or 225-265-1013
FAX: 225-265-9348
NAME: Fr. Rubin Dykes
EMAIL: stphilip.gcah@gmail.com

PARISH: **ST. ELIZABETH/ & ST. JULES**
ADDRESS: P.O. Box 38/Hwy 1
Belle Rose, LA 70341
PHONE: 225-473-8569 & 985-369-7398
FAX: 225-473-2950 & 985-369-9892
NAME: Angelle Blanchard, DRE
EMAIL: dre@sesjchurch.com

SCHOOL DIRECTORY

NORTH CENTRAL DEANERY

SCHOOL: **SACRED HEART SCHOOL**
ADDRESS: 2251 Main Street
Baton Rouge, LA 70802
PHONE: 225-383-6671
FAX: 225-387-6674
NAME: Lori Lively Tomecek
EMAIL: ltomecek@sacredheartbr.org

SCHOOL: **ST. ALPHONSUS SCHOOL**
ADDRESS: 13940 Greenwell Springs Road
Greenwell Springs, LA 70739
PHONE: 225-261-5299
FAX: 225-261-2795
NAME: Lynette Shaffett
EMAIL: lshaffett@stalphonsusbr.org

SCHOOL: **REDEMPTORIST ELEMENTARY**
ADDRESS: 3655 St. Gerard
Baton Rouge, LA 70805
PHONE: 225-355-1437
FAX: 225-355-1879
NAME: Cassandra Will
EMAIL: cwill@resbr.org

SCHOOL: **ST. LOUIS KING OF FRANCE SCL.**
ADDRESS: 2311 N. Sherwood Forest St.
Baton Rouge, LA 70815
PHONE: 225-273-3932
FAX: 225-273-3978
NAME: Ed Kavanaugh, Principal
EMAIL: principal@slkf.org

NORTHEAST DEANERY

SCHOOL: **HOLY GHOST SCHOOL**
ADDRESS: 507 N. Oak Street
Hammond, LA 70401
PHONE: 985-345-0977
FAX: 985-542-6545
NAME: Theresa Patti
EMAIL: tpatti@hgschool.org

SCHOOL: **ST. JOSEPH SCHOOL**
ADDRESS: 175 N 8th Street
Ponchatoula, LA 70454
PHONE: 985-386-6421
FAX: 985-386-0560
NAME: Ellen Dyer
EMAIL: edyer@sjscrusaders.org

SCHOOL: **MATER DOLOROSA SCHOOL**
ADDRESS: P.O. Box 380
Independence, LA 70443
PHONE: 985-878-4295
FAX: 985-878-4888
NAME: Melissa Mixon
EMAIL: mmixon@mdeagles.org
hcoslan@mdeagles.org

SCHOOL: **ST. THOMAS AQUINAS H.S.**
ADDRESS: 14520 Voss Drive
Hammond, LA 70401
PHONE: 985-542-7662
FAX: 985-542-4010
NAME: Grace Gambel
EMAIL: ggambel@stafalcons.org/

SCHOOL DIRECTORY

NORTHWEST DEANERY

SCHOOL: **CATHOLIC ELEM. OF
POINTE COUPEE**
ADDRESS: 304 Napoleon Avenue
New Roads, LA 70760
PHONE: 225-638-9313 x219
FAX: 225-638-9953
NAME: Capi Merrick—CRE
EMAIL: cmerrick@catholicpc.com

SCHOOL: **CATHOLIC HIGH OF
POINTE COUPEE**
ADDRESS: 504 Fourth Street
New Roads, LA 70760
PHONE: 225-638-9313 x210
FAX: 225-638-6471
NAME: Frances Moody—CRE
EMAIL: fmooddy@catholicpc.com

SCHOOL: **HOLY FAMILY SCHOOL**
ADDRESS: 335 N. Jefferson Avenue
Port Allen, LA 70767
PHONE: 225-344-4100
FAX: 225-344-1928
NAME: Vincel Simpson
EMAIL: vsimpson@hfspace.com

SCHOOL: **ST. JOHN INTERPAROCHIAL SCHOOL**
ADDRESS: Elem/Middle office:
58645 St. Clement Avenue
Plaquemine, LA 70764
PHONE: 225-687-6616
FAX: 225-687-6984

ADDRESS: High School office:
24250 Regina Street
Plaquemine, LA 70764
PHONE: 225-687-3056
FAX: 225-687-3530

NAME: Lisa Morel, DRE
EMAIL: lmorel@stjohnschool.org

SOUTHEAST DEANERY

SCHOOL: **ST. PETER CHANEL
INTERPAROCHIAL SCHOOL**
ADDRESS: 2590 LA Highway 44
Paulina, LA 70763
PHONE: 225-869-5778/225-869-5751
FAX: 225-869-8131
NAME: Donna Waguespack
EMAIL: dwaguespack@rivrdcat.org

SCHOOL: **ST. THERESA OF AVILA
SCHOOL**
ADDRESS: 212 E. New River Street
Gonzales, LA 70737
PHONE: 225-647-2803
FAX: 225-647-7814
NAME: Kim Lacinak
SCHOOL: **ST. JOHN PRIMARY SCHOOL**
ADDRESS: 37407 Duplessis Rd.
Prairieville, LA 70769-4821
PHONE: 225-647-2803
NAME: Kim Lacinak
FAX: 225-647-7814
EMAIL: kimlacinak@sjp-sta.org

SOUTHWEST DEANERY

SCHOOL: **ASCENSION CATHOLIC
DIOCESN REGIONAL SCHOOL**
ADDRESS: 311 St. Vincent St
Donaldsonville, LA 70346
PHONE: 225-473-9227
FAX: 225-473-9235
NAME: Agnes Pizzolato
EMAIL: agnes.pizzolato@acbulldogs.org

SCHOOL: **ST. ELIZABETH SCHOOL**
ADDRESS: P.O. Drawer M
Paincourtville, LA 70391
PHONE: 985-369-7402
FAX: 985-369-1527
NAME: Sr. Anija Jacobs
EMAIL: sisteranija@sescubs.com

SCHOOL DIRECTORY

SOUTH CENTRAL DEANERY

SCHOOL: CATHOLIC HIGH SCHOOL
ADDRESS: 855 Hearthstone Drive
Baton Rouge, LA 70806
PHONE: 225-383-0397
FAX: 225-344-5714
NAME: Scott Losavio, (Campus Minister)
EMAIL: slosavio@catholichigh.org
Patrick Dulaney, Asst. Campus Min.
pdulaney@catholichigh.org
Timothy LaBauve, Rel. Dept. Chair
tlabauve@catholichigh.org

SCHOOL: MOST BLESSED SACRAMENT SCHOOL
ADDRESS: 8033 Baringer Road
Baton Rouge, LA 70817
PHONE: 225-751-5867
FAX: 225-751-6738
NAME: David Planche
EMAIL: dplanche@mbsbr.org

SCHOOL: OUR LADY OF MERCY SCHOOL
ADDRESS: 400 Marquette Avenue
Baton Rouge, LA 70806
PHONE: 225-515-3498
FAX: 225-218-2691
NAME: Carmel Acosta (Fulltime teacher)
EMAIL: cacosta@olomschool.org

SCHOOL: ST. ALOYSIUS SCHOOL
ADDRESS: 2025 Stuart Ave
Baton Rouge, LA 70808
PHONE: 225-383-3871
FAX: 225-383-4500
NAME: Edie Boudreaux
EMAIL: eboudreaux@aloysius.org

SCHOOL: ST. FRANCIS XAVIER SCHOOL
ADDRESS: 1150 S. 12th Street
Baton Rouge, LA 70802
PHONE: 225-387-6639
FAX: 225-383-1215
NAME: Linda Beshears
EMAIL: stfrancisxavier@csobr.org
gillsbeshears@gmail.com

SCHOOL: ST. GEORGE SCHOOL
ADDRESS: 7880 St. George Drive
Baton Rouge, LA 70809
PHONE: 225-293-1298, Ext. 247
FAX: 225-293-4886
NAME: Lynn Blanchard
EMAIL: lynn.blanchard@sgschoolbr.org

SCHOOL: ST. JEAN VIANNEY SCHOOL
ADDRESS: 16266 S. Harrell's Ferry Road
Baton Rouge, LA 70806
PHONE: 225-751-1831 or 202-5212
FAX: 225-752-8774
NAME: Tina Villa
EMAIL: tvilla@stjeanvianneyschool.org

SCHOOL: ST. JOSEPH ACADEMY
ADDRESS: 3015 Broussard Street
Baton Rouge, LA 70808
PHONE: 225-383-7207
FAX: 225-344-5714
NAME: Jennifer Prather, Religion Chair
EMAIL: pratherj@sjabr.org
Anna Leija, Campus Minister
leijaa@sjabr.org
Kristen Lazarine, Asst. Campus Min.
lazarinek@sjabr.org

SCHOOL: ST. JUDE THE APOSTLE SCHOOL
ADDRESS: 9150 Highland Road
Baton Rouge, LA 70810
PHONE: 225-769-2344
FAX: 225-769-0671
NAME: Lori Layman
EMAIL: llayman@stjudebr.org

SCHOOL: ST. MICHAEL THE ARCHANGEL HIGH SCHOOL
ADDRESS: 17521 Monitor Avenue
Baton Rouge, LA 70817
PHONE: 225-753-9782, Ext.33
FAX: 225-753-0605
NAME: Thomas Huck
EMAIL: thuck@smhsbr.org

SCHOOL: ST. THOMAS MORE SCHOOL
ADDRESS: 11400 Sherbrook Drive
Baton Rouge, LA 70815
PHONE: 225-275-2820 ext. 25
FAX: 225-275-0376
NAME: Kristi Miller
EMAIL: millerk@stmbr.org

RCIA COORDINATORS

NORTH CENTRAL DEANERY

PARISH: **Immaculate Conception**
ADDRESS: 1565 Curtis Street
Baton Rouge, LA 70807
PHONE: 225-775-7067
FAX: 225-775-0775
NAME: Cathy Glover
EMAIL: cglover780@aol.com

PARISH: **Our Lady of Mt. Carmel**
ADDRESS: P.O. Box 1249
St. Francisville, LA 70775
PHONE: 225-635-3630
FAX: 225-635-2344
NAME: Pam Percy / 225-635-3149
EMAIL: pampercy1@yahoo.com

Rick Beben, DRE * / 225-241-7981
rick.beben@gmail.com

PARISH: **St. Alphonsus**
ADDRESS: 14040 Greenwell Springs Road
Greenwell Springs, LA 70739
PHONE: 225-261-4644
FAX: 225-261-5650
NAME: Olga Johnson
EMAIL: dre@alphonsus.org

PARISH: **Sacred Heart of Jesus**
ADDRESS: 2250 Main Street
Baton Rouge, LA 70802
PHONE: 225-387-6671
FAX: 225-387-6674
NAME: Clare Coulon
EMAIL: ccoulon@sacredheartbr.org

PARISH: **St. Anthony/Le Van Phung**
ADDRESS: 2305 Choctaw
Baton Rouge, LA 70805
PHONE: 225-357-4800
FAX: 225-354-0611
NAME: Sang Kong Le
EMAIL: Not available

PARISH: **St. Gerard Majella**
PARISH: **ST. GERARD MAJELLA**
ADDRESS: 3808 St. Gerard Avenue
Baton Rouge, LA 70805
PHONE: 225-355-2553
FAX: 225-356-7472
NAME: Fr. Chuong Cao, DRE
EMAIL: admin@stgerardmajellachurch.org

PARISH: **St. Isidore the Farmer (Cluster)**
ADDRESS: 5657 Thomas Road
Baton Rouge, LA 70811
PHONE: 225-775-8850
FAX: 225-775-7072
NAME: Kelly Kofton
EMAIL: kkofton@stisidorecommunity.org

PARISH: **St. Pius X (Cluster)**
ADDRESS: 6380 Hooper Road
Baton Rouge, LA 70811
PHONE: 225-357-5935
FAX: 225-357-6005
NAME: Kelly Kofton
EMAIL: kkofton@stisidorecommunity.org

PARISH: **Hispanic Apostolate**
ADDRESS: 6380 Hooper Road
Baton Rouge, LA 70811
PHONE: 225-769-3587 / 225-252-9051/cell
FAX:
NAME: Rita Rangel
EMAIL: rangelemel@aol.com

PARISH: **St. John the Baptist**
ADDRESS: 4727 McHugh Drive
Zachary, LA 70791
PHONE: 225-654-5885
FAX: 225-654-5294
NAME: Joey Hebert / 225-660-5880
EMAIL: joey.hebert@gapac.com

PARISH: **St. Joseph Cathedral**
ADDRESS: 412 North Street
Baton Rouge, LA 70802
PHONE: 225-387-5928
FAX: 225-387-5929
NAME: Chris Redden
EMAIL: office@cathedralbr.org

PARISH: **St. Louis King of France**
ADDRESS: 2121 N. Sherwood Forest Dr.
Baton Rouge, LA 70815
PHONE: 225-275-7280
FAX: 225-275-5845
NAME: Patricia & Pat Ryan
EMAIL: p_ryan@bellsouth.net

NORTH CENTRAL DEANERY (Continued)

PARISH: **St. Paul the Apostle**
 ADDRESS: 3912 Gus Young Avenue
 Baton Rouge, LA 70802
 PHONE: 225-324-2939 / 225-383-2537
 FAX: 225-383-3702
 NAME: Fr. Richard Andrus/225-383-2537
 EMAIL: ricksvd@aol.com

NORTHEAST DEANERY

PARISH: **Holy Ghost**
 ADDRESS: 601 N. Oak Street
 Hammond, LA 70401
 PHONE: 985-345-3360 x28
 FAX: 985-542-4191
 NAME: Trisha Labbe
 EMAIL: tlabbe@hgchurch.org

PARISH: **St. Joseph**
 ADDRESS: 15710 LA Hwy. 16
 French Settlement, LA 70733
 PHONE: 225-698-3110
 FAX: 225-698-1512
 NAME: Adrienne Halphen/225-695-6223
 EMAIL: adrienne1@eatel.net

PARISH: **Our Lady of Pompeii**
 ADDRESS: P. O. Box 276
 Tickfaw, LA 70466
 PHONE: 985-345-6355
 FAX: 985-542-8490
 NAME: Sr. Joel Gubler, 504-352-5595
 EMAIL: gubler58@aol.com

PARISH: **St. Joseph**
 ADDRESS: P.O. Box 368
 Ponchatoula, LA 70454
 PHONE: 985-386-3749
 FAX: 985-386-4188
 NAME: Ed Hanks *
 EMAIL: julieandedinhammond@yahoo.com

PARISH: **Mater Dolorosa**
 ADDRESS: P. O. Box 349
 Independence, LA 70443
 PHONE: 985-878-9639
 FAX: 985-878-6260
 NAME: Carol Young,
 Dir. of Christian Formation
 EMAIL: carol@materdolorosa.net

PARISH: **St. Stephen the Martyr (Cluster)**
 ADDRESS: 22494 LA Highway 22
 Maurepas, LA 70449
 PHONE: 225-695-6310
 FAX: 225-698-1512
 NAME: Adrienne Halphen/225-695-6223
 EMAIL: adrienne1@eatel.net

PARISH: **St. Albert the Great**
 ADDRESS: 409 West Dakota Street
 Hammond, LA 70401
 PHONE: 985-345-7206
 FAX: 985-345-7223
 NAME: Fr. Michael Miceli
 EMAIL: mmiceli@bellsouth.net

PARISH: **St. Margaret Queen of Scotland**
 ADDRESS: P.O. Box 100
 Albany, LA 70711
 PHONE: 225-567-3573
 FAX: 225-567-2031
 NAME: Mary E. Herbert
 EMAIL: meherbert55@gmail.com

PARISH: **St. Helena**
 ADDRESS: 122 S. 1st Street
 Amite, LA 70422
 PHONE: 985-748-9057
 FAX: 985-748-9094
 NAME: Margaret Peak/985-748-9057
 EMAIL: None available

* RCIA Committee member

NORTHWEST DEANERY

PARISH: Holy Family	PARISH: St. Joan of Arc (Cluster)
ADDRESS: P.O. Box 290 Port Allen, LA 70767	ADDRESS: 39315 Hwy. 75 Plaquemine, LA 70764
PHONE: 225-336-4463	PHONE: 225-545-8213
FAX: 225-383-1839	FAX: 225-545-8213
NAME: Jennifer Lejeune	NAME: No Coordinator at this time
EMAIL: jlejeunehfc@gmail.com	EMAIL:
PARISH: Immaculate Conception	PARISH: St. Ann
ADDRESS: P.O. Box 158 Lakeland, LA 70752	ADDRESS: P. O. Box 128 Morganza, LA 70759
PHONE: 225-627-5819	PHONE: 225-694-3781
FAX: 225-627-5496	FAX: 225-694-3711
NAME: Rachel Christ, 225-978-5852	NAME: Maureen Feduccia
EMAIL: rchrist025@aol.com	EMAIL: mgfeduccia@aol.com
PARISH: St. Joseph/Immaculate Heart of Mary (Cluster)	PARISH: St. Augustine
ADDRESS: 11140 LA Highway 77 Maringouin, LA 70757	ADDRESS: 807 New Roads St. New Roads, LA 70760
PHONE: 225-625-2438	PHONE: 225-638-8409
FAX: 225-625-3513	FAX: 225-638-2947
FAX: 225-625-3513	NAME:
NAME: Elsie Thompson	EMAIL:
EMAIL: duck@spillwaycable.com	PARISH: St. John the Baptist
PARISH: St. Frances Cabrini (Cluster)	ADDRESS: P. O. Box 248 Brusly, LA 70719
ADDRESS: P.O. Box 128 Livonia, LA 70755	PHONE: 225-749-3387
PHONE: 225-625-2438	FAX: 225-749-1921
FAX: 225-625-3513	NAME: Carolyn Dupuy, 225-749-2189
NAME: Peggy Champagne, 225-456-0595/cell	EMAIL: carolyn@sjbcc.brocxmail.com
EMAIL: greenwavesf@spillwaycable.com	PARISH: St. John the Evangelist
PARISH: Our Lady of Prompt Succor	ADDRESS: 57805 Main Street Plaquemine, LA 70764
ADDRESS: P.O. Box 249 White Castle, LA 70788	PHONE: 225-687-2402
PHONE: 225-545-3532	FAX: 225-687-1587
FAX: 225-545-8615	NAME: Donna Carville
NAME: Diane Hebert	EMAIL: dcarville@diobr.org
EMAIL: gran160@cox.net	PARISH: St. Mary of False River
PARISH: Our Lady of Prompt Succor (Cluster)	ADDRESS: 348 W. Main St. New Roads, LA 70760
ADDRESS: P.O. Box 249 White Castle, LA 70788	PHONE: 225-638-6508
PHONE: 225-545-3450	FAX: 225-638-6346
FAX: 225-545-8615	NAME: Gale Roy, 225-638-6049
NAME: Phyllis Jumonville	EMAIL: roygaleb@bellsouth.net
EMAIL: jjjumonville@gmail.com	

* RCIA Committee member

SOUTH CENTRAL DEANERY

PARISH: **Christ the King**
ADDRESS: P.O. Box 25131
Baton Rouge, LA 70894
PHONE: 225-344-8595
FAX: 225-344-1920
NAME: Cynthia Losavio
EMAIL: liturgy@ctk-lsu.org

PARISH: **Immaculate Conception**
ADDRESS: P. O. Box 1609
Denham Springs, LA 70727
PHONE: 225-665-5359
FAX: 225-665-4422
NAME: Dea. Rudy Stahl, 225-665-9631
EMAIL: deaconrudy@icc-msh.org

PARISH: **Most Blessed Sacrament**
ADDRESS: 15615 Jefferson Hwy
Baton Rouge, LA 70817
PHONE: 225-752-6230
FAX: 225-756-5014
NAME: Deacon Don Musso, 225-752-6230
756-5014/FAX
EMAIL: djmussod@mbsparish.org

PARISH: **Our Lady of Mercy**
ADDRESS: 445 Marquette Ave
Baton Rouge, LA 70806
PHONE: 225-926-1883
FAX: 225-923-0448
NAME: Jason Romero, 225-929-9356
EMAIL: jason.romero@olomchurch.com

PARISH: **St. Agnes**
ADDRESS: 749 East Blvd.
Baton Rouge, LA 70802
PHONE: 225-383-4127
FAX: 225-383-4154
NAME: Kitty Blanchard
EMAIL: saintagnes2@bellsouth.net

PARISH: **St. Aloysius**
ADDRESS: 2025 Stuart Ave
Baton Rouge, LA 70808
PHONE: 225-343-6657
FAX: 225-344-6847
NAME: Rebecca East
EMAIL: reast@stalloysiusparish.com

PARISH: **St. Francis Xavier**
ADDRESS: 1134 Julia Street
Baton Rouge, LA 70802
PHONE: 225-383-3479
FAX: 225-343-4259
NAME: John Young
EMAIL: stfranxavierccd@bellsouth.net

PARISH: **St. Gabriel**
ADDRESS: 3625 LA Highway 75
St. Gabriel, LA 70776
PHONE: 225-642-8441
FAX: 225-642-8491
NAME: Myra Tircuit, DRE
EMAIL: myratircuit@bellsouth.net

PARISH: **St. George**
ADDRESS: 7808 St. George Drive
Baton Rouge, LA 70809
PHONE: 225-293-2212
FAX: 225-291-8063
NAME: Karen Fawley *
Adult Faith Formation
EMAIL: karenf@st-george.org

Molly Rose (RCIC)
293-2212
Children's Faith Formation
mollyr@st-george.org

PARISH: **St. Jean Vianney**
ADDRESS: 16166 S. Harrell's Ferry Road
Baton Rouge, LA 70816
PHONE: 225-753-7950
FAX: 225-753-7965
NAME: Eddie Wright *
EMAIL: wrighted3@yahoo.com

PARISH: **St. Jude the Apostle**
ADDRESS: 9150 Highland Road
Baton Rouge, LA 70810
PHONE: 225-766-2431
FAX: 225-766-0722
NAME: Melanie Chabarria
EMAIL: melaniec@stjudecatholic.org

* RCIA Committee member

SOUTH CENTRAL DEANERY continued

PARISH: **St. Patrick**
ADDRESS: 12424 Brogdon Lane
Baton Rouge, LA 70816
PHONE: 225-752-3898
FAX: 225-756-9636
NAME: Shirley Charbonnet, 266-0916
EMAIL: shirley@fasttrack.net

PARISH: **St. Thomas More**
ADDRESS: 11441 Goodwood Blvd.
Baton Rouge, LA 70815
PHONE: 225-275-3940 x 107
FAX: 225-275-1407
NAME: Sarah Neau
EMAIL: sarah@stmchurch.org

PARISH: **Hispanic Apostolate**
ADDRESS: 7520 Florida Blvd.
Baton Rouge, LA 70806
PHONE: 225-769-3587
FAX: 225-769-3587
NAME: Rita Rangel, DRE
EMAIL: rangelemel@aol.com
Bro. Renzo Alvarado
renzoalvaradosuarez@gmail.com

NAME: Rev. Eliecer T. Grimaldos
EMAIL: fatheremcm@gmail.com

PARISH: **Hispanic Apostolate**
ADDRESS: 7520 Florida Blvd.
Baton Rouge, LA 70806
PHONE: 225-769-3587
FAX: 225-769-3587
NAME: Rita Rangel, DRE
EMAIL: rangelemel@aol.com
Bro. Renzo Alvarado
renzoalvaradosuarez@gmail.com

NAME: Rev. Eliecer T. Grimaldos
EMAIL: fatheremcm@gmail.com

SOUTHEAST DEANERY

PARISH: **Holy Rosary**
ADDRESS: 44450 Hwy. 429
St. Amant, LA 70774
PHONE: 225-647-3696
FAX: 225-647-3494
NAME: Brenda Sterling or Wendy Enloe
EMAIL: sterling1@eatel.net / holyrosaryre@eatel.net

PARISH: **Most Sacred Heart of Jesus** (Cluster)
ADDRESS: PO Box 129
Paulina, LA 70763
PHONE: 225-869-5751
FAX: 225-869-5324
NAME: Harriet Melancon
EMAIL: hdm8@cox.net

PARISH: **St. Joseph Parish** (Cluster)
ADDRESS: P. O. Box 129
Paulina, LA 70763
PHONE: 225-869-5751
FAX: 225-869-5324
NAME: Harriet Melancon
EMAIL: hdm8@cox.net

PARISH: **St. Michael the Archangel** (Cluster)
ADDRESS: P. O. Box 129
Paulina, LA 70763
PHONE: 225-869-5751
FAX: 225-869-4166
NAME: Harriet Melancon
EMAIL: hdm8@cox.net

PARISH: **St. John the Evangelist**
ADDRESS: 15208 LA Hwy 73
Prairieville, LA 70769
PHONE: 225-673-8402
FAX: 225-673-8680
NAME: Donna Perque
EMAIL: dgums@cox.net

PARISH: **St. Mark**
ADDRESS: 42021 Highway 621
Gonzales, LA 70737
PHONE: 225-647-8461
FAX: 225-647-5125
NAME: Donna Chestovich, 225-938-1012
Kathleen LoCicero, 225-446-3777
EMAIL: dchestovich@hotmail.com
stmarkmgr@eatel.net

PARISH: **St. Theresa of Avila**
ADDRESS: 1022 N. Burnside Ave
Gonzales, LA 70737
PHONE: 225-647-6588 ext.11
FAX: 225-647-2223
NAME: Alice Blair*
EMAIL: ablair@eatel.net

PARISH: **St. Anne/St. Anthony** (Cluster)
ADDRESS: P. O. Box 9
Sorrento, LA 70778
PHONE: 225-675-8126
FAX: 225-675-6150
NAME: Shanon Collins
EMAIL: stannepsr@eatel.net

* RCIA Committee member

SOUTHWEST DEANERY

PARISH: **Ascension/St. Francis of Assisi** (Cluster)
 ADDRESS: P.O. Box 508
 Donaldsonville, LA 70346
 PHONE: 225-473-8302
 FAX: 225-473-3256
 NAME:
 EMAIL:

PARISH: **St. Philomena**
 ADDRESS: P.O. Box 99
 Labadieville, LA 70372
 PHONE: 985-526-4559
 FAX: 985-526-4128
 NAME: Stephanie Shaw, DRE
 EMAIL: sshaw.dre@gmail.com

PARISH: **St. Catherine of Siena**
 ADDRESS: P.O. Box 1094
 Donaldsonville, LA 70346
 PHONE: 225-473-8350
 FAX: 225-473-9978
 NAME: Dea. Ed Gautreau, Sr./225-717-2999
 EMAIL: gauthre@yahoo.com

PARISH: **St. Joseph the Worker**
 ADDRESS: P. O. Box 190
 Pierre Part, LA 70339
 PHONE: 985-252-6633
 FAX: 985-252-8011
 NAME: Duane Breaux, 985-252-6008
 EMAIL: duane@sjworker.org

PARISH: **St. Benedict the Moor**
 ADDRESS: P. O. Box 220
 Napoleonville, LA 70390
 PHONE: 985-513-3470
 FAX: 985-513-3474
 NAME: Chrystal Dennis/225-323-1778
 EMAIL: chrystaldennis@att.net

PARISH: **St. James** (Cluster)
 ADDRESS: 6613 LA Hwy 18
 St. James, LA 70086
 PHONE: 225-265-4210 or 225-265-1013
 FAX: 225-265-4225
 NAME: Janel Gordon
 EMAIL: jawgordre@gmail.com

PARISH: **Our Lady of Peace**
 ADDRESS: 13281 LA Hwy 644
 Vacherie, LA 70090
 PHONE: 225-265-3953 ext. 13
 FAX: 225-265-2507
 NAME: Pamela Folse*
 EMAIL: pfolse@olopchurch.org

PARISH: **St. Philip** (Cluster)
 ADDRESS: 1175 Hwy. 18
 Vacherie, LA 70090
 PHONE: 225-265-4085 / 225-265-4210 or 225-265-1013
 FAX: 225-265-9348
 NAME: Janel Gordon
 EMAIL: jawgordre@gmail.com

PARISH: **St. Anne/Assumption** (Cluster)
 ADDRESS: P. O. Drawer 99
 Napoleonville, LA 70390
 PHONE: 985-369-6656
 FAX: 985-369-9718
 NAME: Kathy Landry, DRE
 EMAIL: stanne03@att.net

PARISH: **St. Elizabeth/St. Jules**
 ADDRESS: P.O. Box 1
 Paincourtville, LA 70391
 PHONE: 225-473-8569
 FAX: 225-473-2950
 NAME: Megan Braud, DRE
 EMAIL: mbraud@sesjchurch.com

* RCIA Committee member

Youth and Young Adult Ministry Directory

NORTH CENTRAL DEANERY

PARISH: Immaculate Conception
ADDRESS: 1565 Curtis Street
Baton Rouge, LA 70807
PHONE: 225-775-7067
FAX: 225-775-0775
NAME:
EMAIL:

PARISH: Our Lady of Mt. Carmel
ADDRESS: P.O. Box 1249
St. Francisville, LA 70775
PHONE: 225-635-3630
FAX: 225-635-4885
NAME:
EMAIL:

PARISH: Sacred Heart of Jesus
ADDRESS: 2250 Main Street
Baton Rouge, LA 70802
PHONE: 225-387-6671
FAX: 225-387-6674
NAME: Lori Tomecek
EMAIL: ltomecek@sacredheartbr.org

PARISH: St. Alphonsus
ADDRESS: 14040 Greenwell Springs Road
Greenwell Springs, LA 70802
PHONE: 225-261-4650
FAX: 225-261-5650
NAME: Lynette Schaffett
EMAIL: youth@alphonsus.org

PARISH: St. Anthony/Le Van Phung
ADDRESS: 2305 Choctaw Drive
Baton Rouge, LA 70805
PHONE: 225-357-4800
FAX: 225-354-0611
NAME: Dung Anh "Zoom" Nguyen
EMAIL: haidung25@yahoo.com

PARISH: St. Gerard Majella
ADDRESS: 3808 St. Gerard Avenue
Baton Rouge, LA 70805
PHONE: 225-355-2553
FAX: 225-356-7472
NAME: Fr. Chuong Cao, DRE
EMAIL: admin@stgerardmajellachurch.org

PARISH: St. Isidore the Farmer (Cluster)
ADDRESS: 5657 Thomas Road
Baton Rouge, LA 70811
PHONE: 225-775-8850
FAX: 225-775-7072
NAME: Monice Oliphant
EMAIL: moliphant.stisidore01@gmail.com

PARISH: St. Pius X (Cluster)
ADDRESS: 5657 Thomas Road
Baton Rouge, LA 70811
PHONE: 225-775-8850
FAX: 225-775-7072
NAME: Monice Oliphant
EMAIL: moliphant.stisidore01@gmail.com

PARISH: St. John the Baptist
ADDRESS: 4727 McHugh Drive
Zachary, LA 70791
PHONE: 225-654-5778
FAX: 225-654-5796
NAME: Katie Myrick
EMAIL: kmyrick@sjb-ola.org

PARISH: St. Joseph Cathedral
ADDRESS: 412 North Street
Baton Rouge, LA 70802
PHONE: 225-387-5928
FAX: 225-387-5929
NAME: Sheila Juneau
EMAIL: office@cathedralbr.org

PARISH: St. Louis King of France
ADDRESS: 2121 N. Sherwood Forest Drive
Baton Rouge, LA 70807
PHONE: 225-275-7280
FAX: 225-275-5845
NAME: Elise Moran
EMAIL: dre@slkfbr.org

PARISH: St. Paul the Apostle
ADDRESS: 3912 Gus Young Avenue
Baton Rouge, LA 70802
PHONE: 225-383-2537
FAX: 225-383-3702
NAME: Justin Kennedy
EMAIL: spayouthministrybr@gmail.com

NORTHEAST DEANERY

PARISH: Holy Ghost
ADDRESS: 601 N Oak Street
Hammond, LA 70401
PHONE: 985-345-3360 Ext. 26
FAX: 985-542-4191
NAME:
EMAIL:

PARISH: St. Joseph (Cluster)
ADDRESS: 15710 LA Highway 16
French Settlement, LA 70733
PHONE: 225-698-6503
FAX: None
NAME: Selena Guitreau
EMAIL: rjselena1234@yahoo.com

PARISH: Our Lady of Pompeii
ADDRESS: P.O. Box 276
Tickfaw, LA 70466
PHONE: 985-345-8957
FAX: 985-542-8490
NAME: April Baiamont
EMAIL: baiamont@bellsouth.net

PARISH: St. Stephen the Martyr (Cluster)
ADDRESS: 22494 LA Highway 22
Maurepas, LA 70449
PHONE: 225-695-6310
FAX: 225-698-1512
NAME:
EMAIL: saintstephen@eatel.net

PARISH: Mater Dolorosa
ADDRESS: P.O. Box 349
Independence, LA 70443
PHONE: 985-878-9639
FAX: 985-878-6260
NAME: Katy Flynn
EMAIL: katy.flynn@selu.edu

PARISH: St. Joseph
ADDRESS: P.O. Box 368
Ponchatoula, LA 70454
PHONE: 985-351-4126
FAX: 985-386-4188
NAME: Becki Alford
EMAIL: stjoe1feteen1@gmail.com

PARISH: St. Albert the Great
ADDRESS: 409 West Dakota Street
Hammond, LA 70401
PHONE: 985-345-7206
FAX: 985-345-7223
NAME: Sr. Renee Daigle, MSC
EMAIL: reneemsc@marianites.org

PARISH: St. Margaret
ADDRESS: P.O. Box 100
Albany, LA 70711
PHONE: 225-567-3573
FAX: 225-567-2031
NAME:
EMAIL:

PARISH: St. Helena
ADDRESS: 122 S. First Street
Amite, LA 70422
PHONE: 985-748-9057
FAX: 985-748-9094
NAME: Donna Ponson
EMAIL: donna@sthelenachurch.net

NORTHWEST DEANERY

PARISH:	Holy Family	PARISH:	St. Ann
ADDRESS:	P.O. Box 290 Port Allen, LA 70767	ADDRESS:	P.O. Box 128 Morganza, LA 70759
PHONE:	225-383-1838	PHONE:	225-694-3781
FAX:	225-383-1839	FAX:	225-694-3711
NAME:	Jennifer LeJeune	NAME:	Janice Newton
EMAIL:	jlejeunehfc@gmail.com	EMAIL:	mamanewt@yahoo.com
PARISH:	Immaculate Conception	PARISH:	St. Augustine
ADDRESS:	P.O. Box 158 Lakeland, LA 70752	ADDRESS:	807 New Roads Street New Roads, LA 70760
PHONE:	225-627-5124	PHONE:	225-638-7553
FAX:	225-627-5125	FAX:	225-638-2947
NAME:	Leslie Hurst	NAME:	Dinah Bourgeois
EMAIL:	lchurst7@gmail.com	EMAIL:	sacsecretary@josephite.com
PARISH:	Immaculate Heart of Mary (Cluster)	PARISH:	St. John the Baptist
ADDRESS:	11140 Hwy 77 Maringouin, LA 70757	ADDRESS:	P.O. Box 248 Brusly, LA 70719
PHONE:	225-625-2438	PHONE:	225-749-3387
FAX:	225-625-3513	FAX:	225-749-1921
NAME:	Elsie Thompson	NAME:	June Hebert
EMAIL:	duck@spillwaycable.com	EMAIL:	june@sjbcc.brcoxmail.com
PARISH:	St. Frances Cabrini (Cluster)	PARISH:	St. John the Evangelist
ADDRESS:	P.O. Box 128 Livonia, LA 70755	ADDRESS:	57805 Main Street Plaquemine, LA 70764
PHONE:	225-625-2438	PHONE:	225-687-2402
FAX:	225-625-3513	FAX:	225-687-1587
NAME:	Peggy Champagne	NAME:	Cindy Rodrigue
EMAIL:	greenwavesf@spillwaycable.com	EMAIL:	crodrigue@sj.brcoxmail.com
PARISH:	St. Joseph (Cluster)	PARISH:	St. Mary of False River
ADDRESS:	P.O. Box 8 Gross Tete, LA 70740	ADDRESS:	348 West Main Street New Roads, LA 70760
PHONE:	225-625-2438	PHONE:	225-638-6508
FAX:	225-625-3513	FAX:	225-638-6346
NAME:	Elsie Thompson	NAME:	Jennifer Bollich
EMAIL:	duck@spillwaycable.com	EMAIL:	jennbollich@gmail.com
PARISH:	Our Lady of Prompt Succor (Cluster)	PARISH:	St. Joan of Arc (Cluster)
ADDRESS:	P.O. Box 249 White Castle, LA 70788	ADDRESS:	39315 Highway 75 Plaquemine, LA 70764
PHONE:	225-545-3635	PHONE:	225-545-8213
FAX:	225-545-8615	FAX:	225-545-2456
NAME:	Sheila Daigle	NAME:	Rev. Joey Angeles
EMAIL:	wchs722003@yahoo.com	EMAIL:	jangeles@diobr.org

SOUTH CENTRAL DEANERY

PARISH: Christ the King
ADDRESS: LSU Box 25131
Baton Rouge, LA 70894
PHONE: 225-344-8595
FAX: 225-344-1920
NAME: Carla Rutherford
EMAIL: crutherford@ctk-lsu.org

PARISH: Immaculate Conception
ADDRESS: P.O. Box 1609
Denham Springs, LA 70727
PHONE: 225-655-5359
FAX: 225-665-4422
NAME: Kevin Acord
EMAIL: kevinacord@yahoo.com

PARISH: St. Francis de Sales Catholic Deaf
Center at St. Agnes
ADDRESS: 749 East Blvd.
Baton Rouge, LA 70802
PHONE: 225-338-1511
FAX: 225-383-4154
NAME: Donna Davis
EMAIL: ddavis@diobr.org

PARISH: St. Francis Xavier
ADDRESS: 1134 Julia Street
Baton Rouge, LA 70802
PHONE: 225-383-3479
FAX: 225-343-4259
NAME: Gaylynne Mack
EMAIL: gmack@bigbuddyprogram.org

PARISH: Most Blessed Sacrament
ADDRESS: 15615 Jefferson Highway
Baton Rouge, LA 70817
PHONE: 225-752-6230
FAX: 225-756-5014
NAME: West Giffin
EMAIL: wgiffin@mbsparish.org

PARISH: St. Gabriel
ADDRESS: 3625 LA Highway 75
St. Gabriel, LA 70776
PHONE: 225-642-8441
FAX: 225-642-8491
NAME: Fr. Charlie Landry/Myra Tircuit
EMAIL: sgablandry@bellsouth.net
myratircuit@bellsouth.net

PARISH: Our Lady of Mercy
ADDRESS: 445 Marquette Avenue
Baton Rouge, LA 70806
PHONE: 225-926-1883
FAX: 225-933-0448
NAME: Amelia Gallagher
EMAIL: amelia.gallagher@olomchurch.com

PARISH: St. George
ADDRESS: 7808 St. George Drive
Baton Rouge, LA 70809
PHONE: 225-293-2212
FAX: 225-291-8063
NAME: Josh Boudreaux
EMAIL: joshb@st-george.org

PARISH: St. Agnes
ADDRESS: 749 East Boulevard
Baton Rouge, LA 70802
PHONE: 225-338-1511
FAX: 225-383-4154
NAME: Donna Davis
EMAIL: saccd@att.net

PARISH: St. Jean Vianney
ADDRESS: 16166 S. Harrell's Ferry Road
Baton Rouge, LA 70816
PHONE: 225-753-7950
FAX: 225-753-7965
NAME: Russell Stewart
EMAIL: rstewart@stjeanvianney.org

PARISH: St. Aloysius
ADDRESS: 2025 Stuart Avenue
Baton Rouge, LA 70808
PHONE: 225-343-6657 Ext. 3027
FAX: 225-344-6847
NAME: MacDougall Womack
EMAIL: mwomack@stalouisparish.com

SOUTH CENTRAL DEANERY continued

PARISH: St. Jude the Apostle
ADDRESS: 9150 Highland Road
Baton Rouge, LA 70810
PHONE: 225-766-2431
FAX: 225-766-0722
NAME:
EMAIL:

PARISH: St. Patrick
ADDRESS: 12424 Brogdon Lane
Baton Rouge, LA 70816
PHONE: 225-753-5750
FAX: 225-756-9636
NAME: Melissa Harshbarger
EMAIL: cym@stpatrickbr.org

PARISH: St. Thomas More
ADDRESS: 11441 Goodwood Boulevard
Baton Rouge, LA 70815
PHONE: 225-275-3940
FAX: 225-275-1407
NAME: Lauren Gunn/Rosie Vutera
EMAIL: youth@stmchurch.org

PARISH: Hispanic Apostolate
ADDRESS: 6380 Hooper Road
Baton Rouge, LA 70811
PHONE: 225-927-8700
FAX: 225-927-8787
NAME: Jenny Moore/Bro. Cesar Munoz
EMAIL: jmoore@ctk-lsu.org
Ah.pastoraljuvenil@gmail.com

SOUTHEAST DEANERY

PARISH: Holy Rosary
ADDRESS: 44450 Highway 429
St. Amant, LA 70774
PHONE: 225-647-5321
FAX: 225-647-5322
NAME: Brandi Klibert
EMAIL: holyrosaryth@eatel.net

PARISH: St. John the Evangelist
ADDRESS: 15208 Highway 73
Prairieville, LA 70769
PHONE: 225-673-8307
FAX: 225-673-8680
NAME: Ashley Bourgeois
EMAIL: ashleybourgeois@eatel.net

PARISH: Most Sacred Heart of Jesus (Cluster)
ADDRESS: P.O. Box 129
Paulina, LA 70763
PHONE: 225-869-5751
FAX: 225-869-4166
NAME: Melissa Laurent
EMAIL: mlaurent@rivrdcat.org

PARISH: St. Mark
ADDRESS: 42021 Highway 621
Gonzales, LA 70737
PHONE: 225-647-8461
FAX: 225-647-5125
NAME: Garrett Tregre
EMAIL: garretttregre91@gmail.com

PARISH: St. Joseph (Cluster)
ADDRESS: P.O. Box 129
Paulina, LA 70763
PHONE: 225-869-5751
FAX: 225-869-4166
NAME: Melissa Laurent
EMAIL: mlaurent@rivrdcat.org

PARISH: St. Theresa of Avila
ADDRESS: 1022 North Burnside Avenue
Gonzales, LA 70737
PHONE: 225-647-6588 Ext. 14
FAX: 225-647-2223
NAME: Edith "Duke" Soulier
EMAIL: dsoulier@eatel.net

PARISH: St. Michael the Archangel (Cluster)
ADDRESS: P.O. Box 129
Paulina, LA 70763
PHONE: 225-869-5751
FAX: 225-869-4166
NAME: Melissa Laurent
EMAIL: mlaurent@rivrdcat.org

PARISH: St. Ann/St. Anthony (Cluster)
ADDRESS: P.O. Box 9
Sorrento, LA 70778
PHONE: 225-675-8126
FAX: 225-675-6150
NAME: Shanon Collins
EMAIL: stannpsr@eatel.net

SOUTHWEST DEANERY

PARISH: Ascension/St. Francis (Cluster)
ADDRESS: P.O. Box 508
Donaldsonville, LA 70346
PHONE: 225-473-3176
FAX: 225-473-3256
NAME: Susan Jumonville
EMAIL: ssnjmrvll@gmail.com

PARISH: St. Catherine of Siena
ADDRESS: P.O. Box 1094
Donaldsonville, LA 70346
PHONE: 225-473-8350
FAX: 225-473-9978
NAME: Dellina D. Fernandez
EMAIL: plantkidz2@yahoo.com

PARISH: St. Benedict the Moor &
St. Augustine
ADDRESS: P.O. Box 220
Napoleonville, LA 70390
PHONE: 985-513-3470
FAX: 985-513-3474
NAME: Tawana Williams; Jerry Carter
EMAIL: tchris6040@gmail.com
Staffnoon2@yahoo.com

PARISH: Our Lady of Peace
ADDRESS: 13281 LA Highway 644
Vacherie, LA 70090
PHONE: 225-265-3953
FAX: 225-265-2507
NAME: Margaret Cortez
EMAIL: mcortez@olopchurch.org

PARISH: St. Anne/Assumption (Cluster)
ADDRESS: P.O. Drawer 99
Napoleonville, LA 70390
PHONE: 985-369-2130
FAX: 985-369-9718
NAME: Kathy Landry
EMAIL: stanne03@att.net

PARISH: St. Philomena
ADDRESS: P.O. Box 99
Labadieville, LA 70372
PHONE: 985-526-4247
FAX: 985-526-4128
NAME:
EMAIL:

PARISH: St. Joseph the Worker
ADDRESS: P.O. Box 190
Pierre Part, LA 70339
PHONE: 985-252-6633
FAX: 985-252-8011
NAME: Chris Landry
EMAIL: chrislandry@yahoo.com

PARISH: St. James (Cluster)
ADDRESS: 6613 Highway 18
St. James, LA 70086
PHONE: 225-265-4210
FAX: 225-265-4225
NAME:
EMAIL:

PARISH: St. Philip (Cluster)
ADDRESS: 1175 Highway 18
Vacherie, LA 70090
PHONE: 225-265-4085
FAX: 225-265-9348
NAME:
EMAIL:

PARISH: St. Elizabeth/St. Jules
ADDRESS: P.O. Box 1
Paincourtville, LA 70391
PHONE: 225-473-8569
FAX: 225-473-2950
NAME: Megan Braud
EMAIL: megan@stelizabethstjules.com

MAT SCHEDULE

2016-2017

MAT COURSE SCHEDULE ACADEMIC YEAR 2016-2017

MAT

SEPTEMBER

COURSE	TYPE	DATE	TIME	LOCATION	REGISTER BY
CONVERSION & SPIRITUALITY	MAT I	9/10 & 9/17	8am-12:30pm	CLC - TRACY CENTER	9/2/16
PENTATEUCH	MAT II	9/10 & 9/17	8am-12:30pm	CLC - TRACY CENTER	9/2/16
SACRAMENTS	MAT I	9/20 & 9/27	Webinars 6-7:30pm	ONLINE	9/12/2016
CREED	MAT I	9/20 & 9/27	Webinars 6-7:30pm	ONLINE	9/12/2016

OCTOBER

COURSE	TYPE	DATE	TIME	LOCATION	REGISTER BY
SCRIPTURE OT/NT	MAT I	10/15 & 10/22	8am-12:30pm	CLC - TRACY CENTER	10/7/16
MORALITY	MAT I	10/15 & 10/22	8am-12:30pm	CLC - TRACY CENTER	10/7/16
CATHOLIC IDENTITY IN CATHOLIC SCHOOL	MAT I or II	10/18 & 10/19 & 10/20	Webinars 4-5:30pm	ONLINE	10/10/16
CHURCH HISTORY	MAT I	10/18 & 10/25	Webinars 6-7:30pm	ONLINE	10/10/16

NOVEMBER

COURSE	TYPE	DATE	TIME	LOCATION	REGISTER BY
CHURCH HISTORY	MAT I	11/12 & 11/19	8am-12:30pm	CLC - TRACY CENTER	11/4/16
WISDOM LITERATURE	MAT II	11/12 & 11/19	8am-12:30pm	CLC - TRACY CENTER	11/4/16
SCRIPTURE OT/NT	MAT I	11/8 & 11/15	Webinars 6-7:30pm	ONLINE	10/31/16
CONVERSION & SPIRITUALITY	MAT I	11/8 & 11/15	Webinars 6-7:30pm	ONLINE	10/31/16

DIOCESE OF BATON ROUGE
OFFICE OF EVANGELIZATION AND CATECHESIS



1800 SOUTH ACADIAN THRUWAY, BATON ROUGE 70808
(225) 336-8760
www.diofbrec.org

MAT COURSE SCHEDULE ACADEMIC YEAR 2016-2017

JANUARY - FEBRUARY

COURSE	TYPE	DATE	TIME	LOCATION	REGISTER BY
CHRISTOLOGY	MAT I	1/21 & 1/28	8am-12:30pm	CLC - TRACY CENTER	1/12/17
PAULINE EPISTLES	MAT II	1/21 & 1/28	8am-12:30pm	CLC - TRACY CENTER	1/12/17
MORALITY	MAT I	2/4 & 2/11	8am-12:30pm	CLC - TRACY CENTER	1/26/16
JOHANNINE LITERATURE	MAT II	2/4 & 2/11	8am-12:30pm	CLC - TRACY CENTER	1/26/16
SACRAMENTS	MAT I	2/15 & 2/21	Webinars 6-7:30pm	ONLINE	2/6/2016
CREED	MAT I	2/16 & 2/23	Webinars 6-7:30pm	ONLINE	2/8/2016

MARCH

COURSE	TYPE	DATE	TIME	LOCATION	REGISTER BY
EVANGELIZATION, CATECHESIS AND MISSION	MAT I	3/4 & 3/11	8am-12:30pm	CLC - TRACY CENTER	2/24/2016
LUKE/ACTS	MAT II	3/4 & 3/11	8am-12:30pm	CLC - TRACY CENTER	2/24/2016
SACRAMENTS OF INITIATION	MAT II	3/4 & 3/11	8am-12:30pm	CLC - TRACY CENTER	2/24/2016
CATHOLIC IDENTITY IN CATHOLIC SCHOOL	MAT I or II	3/7 & 3/8 & 3/9	Webinars 4-5:30pm	ONLINE	2/27/2016
CHRISTOLOGY	MAT I	3/14 & 3/21	Webinars 6-7:30pm	ONLINE	3/6/2016

APRIL

COURSE	TYPE	DATE	TIME	LOCATION	REGISTER BY
MORALITY	MAT I	4/1	8am-4:30pm	CLC - TRACY CENTER	3/24/2016
PROPHETS	MAT II	4/1	8am-4:30pm	CLC - TRACY CENTER	3/24/2016
SACRAMENTS OF HEALING AND SERVICE	MAT II	4/1	8am-4:30pm	CLC - TRACY CENTER	3/24/2016
CATECHISM OF THE CATHOLIC CHURCH IN CATECHESIS	MAT II	4/4 & 4/5 & 4/6	Webinars 4-5:30pm	ONLINE	3/27/2016

DIOCESE OF BATON ROUGE
OFFICE OF EVANGELIZATION AND CATECHESIS



1800 SOUTH ACADIAN THRUWAY, BATON ROUGE 70808
(225) 336-8760
www.diobrec.org

MAT ONLINE REGISTRATION INSTRUCTIONS

ALL COURSE REGISTRATIONS MUST BE DONE ONLINE TO HAVE CREDIT TRANSMITTED TO YOUR PROFILE.

If this is your first time registering online for a course, please follow these easy steps:

- First, obtain your *Activation Code* from your DRE or CRE. The Activation Code is the ID number next to your name on the profile.
- You must then link your profile to the SchoolFiles system that houses the records. To do this:
 - Go to www.schoolfiles.com
 - Click on *Set Up A Profile*. You will be asked for:
 - Your email (which will act as your user name)
 - A password (Please use one that you will remember!)
 - Answers to security questions
 - Activation Code
 - Then you can link to your profile. Once you are linked you can proceed with the registration process.
- **GO 2** www.diobrchristianformation.org
- **GO 2** the top of the webpage and click *Calendar*
- **GO 2** the date of the first class day of the course you wish to take and click on that date; you will see the course information.
- **GO 2** the *Click Here* button to register
- Follow the prompts on the screen
- A notice will be sent to you within 24 hours that you have successfully registered for the class.

Please note: payment is done online at this time. **INSTRUCTORS CANNOT ACCEPT REGISTRATIONS OR REGISTRATION PAYMENTS ON THE DAY OF CLASS.**

Registration Fees: \$45.00

